



MANAGED WORKSPACE CENTRES

INSIDE THE HUB OF CREATIVITY AND COLLABORATION

WHY WORKSHOPS : MATTER MORE THAN EVER

**DIRECTORY - FIND, CONNECT
WITH OTHER BUSINESSES**

**TEAM HULL AWARDS:
PARTNERSHIP EXTERNAL AWARD
HIGHLY COMMENDED**

**MOVING ON UP:
WITH STERLING GROUP
AND BEAN GROUP**

**COFFEE MORNINGS:
TEAM MEMBERS FOSTERING A
STRONG COMMUNITY SPIRIT**



INSIDE THE HUB

EDITORIAL

Allan Rookyard
Managed Workspace Centres Manager

DESIGN

Mike Young
Business Development Officer

CONTRIBUTORS THIS ISSUE

STERLING AND BEAN GROUPS



MATT NIBLETT



JACOB MCLEAN, OLIVIA ZREBIECC, BRANDON WILLBY

Socials

f @hccmwc
X @hccmwc
Instagram @managedworkspace
in hccmwc

Centres

Louis Pearlman Centre

Goulton Street, Hull ☎ 01482 612 478

Bespoke Centre

Zeals Garth, Hull ☎ 01482 692 494

Craven Park Centre

Poorhouse Lane, Hull ☎ 01482 379 514

@ managedworkspace@hullcc.gov.uk

www.hull.gov.uk/CommercialProperty/
managed-workspace-centres

PAST ISSUES



AI In the Workplace: collaboration rather than replacement

Welcoming new team member:
Olivia Zrebiec

Ctlr, Alt, Fixed!
Chris Richardson, Technical Director
of FPS Tech

ISSUE 17



In Focus with Darren Hyde -
121 Digital Marketing

ACN Electrical:
Supporting Our Industry and
Investing in the Future

A Review Of The Year And A Look To
The Year Ahead

ISSUE 16



In Focus with Jayne Grant -
Rhapsody Activities

Managed Workspace Centres
Where they came from

An inspiration for others:
Dent and Cook Mortgage Brokers

ISSUE 15

You can read back issues by
visiting the website



LETTER FROM THE MANAGER



Dear Valued Members,

Welcome to Issue 18 of Inside the Hub of Creativity and Collaboration.

As we continue through 2026, this edition focuses on something that sits at the very heart of our centres - connection. Whether that's through learning, networking, or celebrating success, this issue highlights how coming together as a community continues to drive growth, opportunity, and innovation across our Managed Workspace Centres.

One of our key features explores why workshops matter more than ever. In today's fast-paced business environment, taking the time to step away, learn something new, and connect with others is not just valuable - it's essential. Workshops provide a space to share ideas, build confidence, and develop practical skills, while also opening the door to new relationships and opportunities.

That sense of connection is something we've also been actively building within our centres. Our recent coffee mornings, held across the Louis Pearlman, Bespoke, and Craven Park, have brought businesses together in a relaxed and welcoming environment. These events have already proven how powerful a simple conversation can be - strengthening relationships, sparking ideas, and reinforcing the strong community spirit that defines our centres.

We're also incredibly proud to feature our recent recognition at the Team Hull Awards 2026, where the Managed Workspace Centres team received a Highly Commended award in the Partnership External category. This recognition reflects the work we do every day alongside our businesses - supporting over 140 organisations, helping ideas grow, and creating opportunities that benefit not only individuals, but entire communities across Hull.

In this issue, we also spotlight the continued success of businesses within our centres, including the expansion journey of Sterling Group and Bean Group, demonstrating what can be achieved with ambition, adaptability, and the right support network in place.

As always, you'll find our business directories, designed to help you connect, collaborate, and support one another - because ultimately, the strength of our centres lies not just in the spaces we provide, but in the people and businesses that bring them to life.

Thank you, as ever, for being such an important part of this community. Your willingness to collaborate, share, and support one another continues to make our centres vibrant, inspiring places to work and grow.

Enjoy the read!

Best regards

Allan Rookyard

Allan Rookyard
Managed Workspace Centre Manager

MEET THE TEAM



ALLAN

MANAGED WORKSPACE
CENTRE MANAGER



01482 613 594



allan.rookyard@hullcc.gov.uk



HAYLEY

TEAM LEADER



01482 616 256



hayley.drust@hullcc.gov.uk



MIKE

BUSINESS DEVELOPMENT OFFICER



01482 613 624



mike.young@hullcc.gov.uk



NIGEL

BUSINESS DEVELOPMENT OFFICER



01482 612 334



nigel.lendon@hullcc.gov.uk



MATT

BUSINESS DEVELOPMENT OFFICER



01482 613 614



matthew.niblett@hullcc.gov.uk



JACOB

BUSINESS DEVELOPMENT OFFICER



01482 613 704



jacob.mclean@hullcc.gov.uk



BRANDON

BUSINESS DEVELOPMENT OFFICER



01482 614 811



brandon.willby@hullcc.gov.uk



OLIVIA

BUSINESS DEVELOPMENT OFFICER



01482 414641



Olivia.Zrebic@hullcc.gov.uk



CARL

CARETAKER



TONY

FACILITIES ASSISTANT

Louis Pearlman Centre Licensee Directory



- | | | | | | |
|----|---|-----|--|-----|---|
| 1 | Supply Haus
www.supplyhaus.co.uk | 29 | East Riding Electronics
www.eastridingelectronics.co.uk | 110 | YMSH
www.ymsh.co.uk |
| 2 | Hilite Highways Control Specialist Ltd | 30 | | 113 | Inspired Press Limited
www.catherinescountryclub.com |
| 3 | Team Darts
www.teamdarts.co.uk | 31 | Kesslemann Heating Ltd
www.kesslemann.co.uk | 114 | East Yorkshire Security
www.eastyorkshiresecurity.co.uk |
| 4 | | 32 | East Yorkshire Security
www.eastyorkshiresecurity.co.uk | 115 | Fortis Therapy and Training
www.fortistherapy.co.uk |
| 5 | G&C Furniture Repairs
www.gc-furniture-repairs.co.uk | 33 | Holderness Technical Services | 116 | ACN Electrical Ltd
www.acnelectrical.co.uk |
| 6 | Trident Plumbing and Heating
www.tridentplumbingandheatingltd.co.uk | 34 | Fusion Advanced Training
www.fusionadvancedtraining.com | 117 | Your Lead Generation Ltd
www.yourleadgeneration.co.uk |
| 7 | JH Trading Ltd
www.jhtoutlet.co.uk | 35 | Solarfrost Ltd
www.solarfrost.co.uk | 118 | |
| 8 | HESH Computer Services Ltd
www.hesh.co.uk | 36 | Compassa
www.compassa.co.uk | 119 | Pick and Mix Bricks
www.pickandmixbricks.brickowl.com |
| 9 | Sam Harrison Trading Ltd | 37 | East Coats Painting & Decorating Ltd
www.eastcoats.co.uk | 120 | Enablement Group Limited
www.enablementgroup.co.uk |
| 10 | Bispol Candles LTD
www.bispolcandles.co.uk | 38 | Techade LTD | 121 | Skin and Laser Treatments |
| 11 | Rick Byrne Carpentry and Joinery | 39 | | 122 | EMBE Acupuncture & Complementary Health Clinic
www.embeacupuncture.co.uk |
| 12 | Humber Electrical Training
www.humberelectricaltraining.co.uk | 40 | Fosse Services Limited | 123 | Prestige Site Services |
| 13 | FPS Tech Limited
www.fpstech.co.uk | 41 | Carbide Tooling Group
www.carbidetoolinggroup.co.uk | 124 | Humberside Fish Producers Organisation Limited |
| 14 | Bralux
www.bralux.co.uk | 42 | Complete Property Revival
www.completepropertyrevival.co.uk | 125 | Abbotrack Security
www.abbotrack.com |
| 15 | Totsi Ltd
www.totsi.co.uk | 43 | Markham Wallis Limited
www.markhamwallis.co.uk | 126 | Peter Toth |
| 16 | | 45 | Bielbys
www.bielbys.com | 128 | Forward Motor Finance Limited
www.forwardmotorfinance.co.uk |
| 17 | BoozeDrop
www.boozedrop.uk | 46 | L N Electrical
www.l-nelectrical.co.uk | 129 | |
| 18 | Up-light
www.up-light.co.uk | 48 | LX Repairs
www.facebook.com/LXRepairs | 130 | The Rybec Group Limited
www.rybec.co.uk |
| 19 | | 50 | Redfez Limited
www.redfez.co.uk | 131 | The Rose Quartz Photography
www.therosequartzphotography.com |
| 20 | OAT Productions
www.oatproductions.co.uk | 100 | Express H&S Limited
www.sites.google.com/view/expresshs/home | 132 | VIP Creative
www.vipcreative.co.uk |
| 21 | Image Solutions Ltd | 101 | Bright Edge Networks
www.brightedgenetworks.com | 133 | Sam Harrison Trading Ltd |
| 22 | ACN Electrical Ltd
www.acnelectrical.co.uk | 102 | Scottzillaprod
www.scottzillaprod.com/services | | |
| 23 | Humber Computers / Game Depot Ltd
www.facebook.com/gamedepotuk | 103 | Sparta Testing Services Ltd
www.spartatesting.co.uk | | |
| 24 | Mokko | 104 | Bolder Group LTD
www.boldervisual.co.uk | | |
| 25 | Kain Marshall | 105 | | | |
| 26 | Mercury ITS Ltd | 107 | | | |
| 27 | Meridian Training Academy | 108 | Tree First Limited | | |
| 28 | Fourleaf IP Ltd | 109 | East Riding Finance Ltd
www.eastridingfinance.com | | |



Craven Park Centre Licensee Directory



- | | | | |
|--|---|---|--|
| 1 Reception | 8 Preston Furniture Solutions
www.prestonfurnitureolutions.co.uk | 21 Moduflow Plumbing and Heating
https://www.facebook.com/profile.php?id=100050961084013 | 34 |
| 2 UPVC Logistics Limited
www.upvclogistics.co.uk | 9 | 22 Therapy Services UK
www.therapyservicesuk.org.uk | 35 Coates Cover
www.coatescover.co.uk |
| 3 Hull Kingston Rovers
www.hullkr.co.uk | 10 Royal Mencap Society
www.mencap.org.uk | 23 Therapy Services UK
www.therapyservicesuk.org.uk | 36 Dan Pearce Fitness Ltd
Instagram @TRAINEDBYDP |
| 4 Hull Training
www.hcctraining.ac.uk | 11 Total Training & Development
www.ttd-education.org | 24/25 By Design Holidays | 37 |
| 5 Hull Training
www.hcctraining.ac.uk | 12 Nexa Law | 26 G10 Digital Ltd
www.g10digital.com | 38 Bee Fire Protection LTD
www.bee-firepro.co.uk |
| 6 | 13 Prestige Floorcoverings UK | 27 121 Digital Marketing
www.121digitalmarketing.co.uk | 39 Airmed Psychology Limited
www.airmedpsychology.co.uk |
| | 14 Frame and Finish | 28 Northern Air Conditioning | 40 Michael Lloyd |
| | 15 Arrow Driving Academy
www.arrowdrivingacademy.co.uk | 29 Levente Rog | 41 Yorkshire Control and Power Ltd
www.yorkshirecontrolandpower.com |
| | 16 Just Gilbey IT Solutions LTD
www.justgilbey.co.uk | 30 Airport Cars Hull
www.airportcarshull.co.uk | 42 Haydn George Construction LTD
www.haydngeorge.co.uk |
| | 17 | 31 UK Weather Services Ltd
www.realweather.co.uk | |
| | 18 Cleansure Ltd
www.cleansurecleaning.com | 33 Door Repair & Service Yorkshire
www.doorrepairandservice.co.uk | |
| | 19 SJS Flooring
www.sjsflooring.co.uk | | |
| | 20 | | |

Bespoke Centre Licensee Directory



- | | | |
|--|---|--|
| 1 Rhapsody Activities | 10 R-Evolution
www.r-evolution.org.uk | 17 RD - Physio - Hull
www.rd-physio-hull.co.uk |
| 2 Rhapsody Activities | 12 Alex Carling Training & Therapeutic Services
www.counsellinginhull.co.uk | 18 Verrdi Transport Support Services
www.verrdi.co.uk |
| 3 Foxglove Supported Living
www.foxglovecare.co.uk | 13 Sunshine Technology
www.sunshinetechnology.co.uk | 19 Suzannah Hypnotherapy Solutions
www.shs-hypnotherapy.co.uk |
| 5 Kingswood Nutrition
www.kingswoodnutrition.co.uk | 14 Sterling Group (Yorkshire) Limited
www.sterlinggroup.co.uk | 20 |
| 6 RLB Services Electronical Ltd
rlbservices.co.uk | 15 Bean Group Limited | 21 Brightstart Day Nurseries
www.brightstartdaynurseries.co.uk |
| 7 Reliance Community Care Ltd
www.reliancecommunitycare.co.uk | 16 Foxglove Supported Living
www.foxglovecare.co.uk | 22 Brightstart Day Nurseries
www.brightstartdaynurseries.co.uk |
| 8 Reliance Community Care Ltd
www.reliancecommunitycare.co.uk | | 23 Brightstart Day Nurseries
www.brightstartdaynurseries.co.uk |
| 9 Louise Brewer Foot Health Practitioner
www.facebook.com/louise.brewer.foo
thealthpractitionerpaafhp0354 | | |

CELEBRATING PARTNERSHIP PEOPLE & PURPOSE

Hull Awards 2026



There are moments in any organisation where you pause, take stock, and truly appreciate the impact of the work being done every day. The Team Hull Awards 2026, held on Wednesday 25th March was one of those moments.



Bringing together colleagues from across the council, the event celebrated the people, teams, and partnerships that quietly, and often tirelessly, make a difference to the lives of others. With 19 winners and highly commended recipients recognised across a range of categories, the afternoon was more than just an awards ceremony. It was a powerful reminder of what public service looks like at its very best.

As Hull City Council's Chief Executive Matt Jukes so aptly reflected, it was "uplifting and inspiring" - a celebration not just of those recognised on stage, but of every individual contributing to the city's growth, care, and opportunity.

Among those honoured on the day was our Managed Workspace Centres (MWC) Team, in which (spoiler alert!) received a Highly Commended award in the Partnership External category - which is a recognition that speaks volumes about the impact of our work across Hull.

MORE THAN JUST WORKSPACES

At first glance, Managed Workspace Centres might be seen simply as places of business that homes units, offices, and workshops where companies operate day to day. But behind the doors of these centres lies something far more meaningful.

Our MWC team has built a model rooted in partnership, trust, and human connection. Supporting over 140 businesses across Hull, our work goes far beyond providing physical space. We walk alongside entrepreneurs at every stage of their journey - from the uncertainty of starting out to the confidence of growth and expansion.

Over the last 5 year, more than 100 start-ups have taken their first steps into business within these centres. That's 100 individuals or teams who turned an idea into reality - often overcoming barriers, self-doubt, and limited resources along the way. And at the heart of that success is a team that doesn't just manage buildings - we believe in people.

TO POWER THE PARTNERSHIP

The Partnership External category is about collaboration - about recognising that the best outcomes are rarely achieved alone. It's about organisations working together, sharing knowledge, and creating opportunities that extend far beyond their own remit.

Our MWC team looks to embody this fully.

Our approach is hands-on, proactive, and deeply personal. We support businesses with everything from navigating compliance and accessing funding, to marketing, recruitment, and long-term planning. But perhaps more importantly, we provide something less tangible...a self-confidence and belief.

Confidence to take risks. Confidence to grow. Confidence to believe that success is possible.

Through strong links with training providers, employment schemes, and community organisations, our team has created a network of support that opens doors for businesses - many of which may never have had access to these opportunities otherwise.

The result? Over 250 jobs supported across the centres, businesses expanding into larger premises, and a ripple effect of economic and social value felt across the city.



RECOGNITION THAT REFLECTS REAL IMPACT

Being named Highly Commended in such a competitive category is no small achievement. It places our Managed Workspace Centres team alongside some of the most impactful partnership work happening across Hull - including projects delivering vital health services and safeguarding both people and communities.

But what makes this recognition truly special is what it represents.

It represents the entrepreneur who took a chance on themselves. The small business that hired its first employee. The community that gained new opportunities and local services.

It reflects the quiet, consistent effort of a team that shows up every day, committed to helping others succeed.

LEADERSHIP THAT CHALLENGES PEOPLE

Behind every successful team is strong leadership, and this recognition also shines a light on me, Allan Rookyard, the Managed Workspace Centres Manager. Now here is something I don't do at all, and honestly, I really struggled to add it in. But if I can't pat myself on the back and be proud then there is something wrong.

It was my submission for the awards captured not just the statistics, though they are impressive, but the human stories behind them. It was for me to articulate the impact of the team's work, both economically and socially, ensured that their contribution was seen, understood, and celebrated.

More importantly, in a way, it's leadership that reflects the very values the awards aim to recognise partnership, ambition, respect, and a people-first approach. By creating, installing and promoting a culture of support, collaboration, and continuous improvement, I have played my part to shape an environment where businesses, and individuals, can thrive.

TELLING THE STORIES THAT MATTER

Of course, recognition doesn't happen in isolation. It's built on visibility - on sharing stories, celebrating successes, and ensuring that the work being done reaches a wider audience. That's where the contribution of Mike Young, Business Development Officer, plays an important role.

Through the structure and development of publications like this magazine, Mike helps bring these stories to life - showcasing the journeys, achievements, and impact of the businesses and teams within the centres. It's this storytelling that not only celebrates success but also inspires others to take that first step, make that connection, or pursue that idea.

Because sometimes, seeing what's possible is all it takes to get started.

A CELEBRATION OF WHAT'S POSSIBLE

The Team Hull Awards are, at their core, about recognising excellence. But more than that, they are about reminding us of what can be achieved when people come together with a shared purpose.

For our Managed Workspace Centres team, this Highly Commended recognition is not just an award - it's a reflection of the lives changed, the businesses built, and the communities strengthened through their work.

It's proof that partnership matters. That support matters. That people matter.

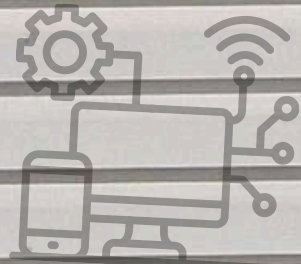
As Hull continues to grow and evolve, it is teams like ours, working quietly behind the scenes and championing others, that will continue to shape its future.

And if this year's awards are anything to go by, that future is full of promise.



MOVING ON UP

Sterling Group and Bean Group



This month Business Development Officer Matt Niblett sat down with Phil Bean to discuss the exciting expansion which triggered a move from Louis Pearlman Centre to the Bespoke Centre.

What motivated the need to move and why choose Bespoke Centre?

“We were already based with Managed Workspace Centres at Louis Pearlman Centre, with Sterling Group and Bean Group. Sterling Group offer technology installation services and Bean Group are a Professional Services Company with app development, website design and consultancy. The office and centre were both a really good fit with access and ease of parking, plus all staff across the centres provided a great support network, so we really liked it there” explained Phil.

Phil added “But we had a couple of sudden developments. The addition of a new company to the group: Sterling Healthcare Technologies, providing new radar-based technology to support healthcare and dignified assisted living. We also acquired a local IT Support Managed Service & Cyber Security Provider. This effectively increased our staff numbers overnight and created the need for further space which wasn't available at the time at Louis Pearlman Centre. However, Centre Manager Allan Rookyard was really helpful and made them aware of extra space coming available at the Bespoke Centre. This was followed by staff at Bespoke Centre supporting and facilitating a fast and seamless transition between centres.”

So, what are the next steps in the group's impressive and ambitious progression?

“Right now, it's about building stability and security in the group through building each of the businesses, through diversification. This is achieved by utilising our core skill set, based around engineering, technology, IT and infrastructure; despite each of these businesses going into different verticals, they all encompass that core skill set. This enables us to provide a range of services and technologies across different sectors and onboard new clients. This move is about expansion, but also about securing a sustainable and secure rate of growth for the businesses for long term security and stability. We look forward to what the future holds for us” said Phil.



07368 997469



www.sterlinggroup.uk

Why Workshops

MATTER MORE

THAN EVER

In today's fast-moving business landscape, standing still is no longer an option. Whether you're a start-up, SME, or established organisation, continuous learning is essential...and one of the most effective, engaging ways to achieve it is through workshops.

Unlike traditional training methods, workshops are interactive by design. They bring people together to learn, share ideas, and solve problems in real time. This hands-on approach is proven to be far more impactful than passive learning, allowing participants to apply new knowledge immediately and walk away with practical, usable skills.

But beyond the experience itself, the data tells a compelling story. Businesses that invest in training and development, including workshops, see a 17% increase in productivity and a 21% boost in profitability. Even more striking, organisations with strong learning cultures report 218% higher income per employee compared to those that don't prioritise development.

So why are

WORKSHOPS

EFFECTIVE

But beyond the experience itself, the data tells a compelling story. Businesses that invest in training and development, including workshops, see a 17% increase in productivity and a 21% boost in profitability. Even more striking, organisations with strong learning cultures report 218% higher income per employee compared to those that don't prioritise development.



Firstly, they develop people and people drive businesses.

Workshops help employees build confidence, strengthen skills, and improve problem-solving abilities. When teams feel equipped and supported, they perform better. In fact, 92% of employees say training positively impacts their engagement, and engaged teams are more productive, motivated, and committed.

Secondly, workshops create something that can't be replicated through online learning alone - a real human connection! Bringing people together in a shared environment encourages collaboration, encourages idea-sharing, and encourages you to build stronger teams and pipelines. Participants learn not only from facilitators, but from each other - gaining insights, perspectives, and experiences that simply aren't available in isolation.

and then

there's the

NETWORKING

Workshops are, at their core, powerful networking opportunities. They place you in a room with like-minded professionals, potential collaborators, and even future clients. Business networking is built on relationships, and those relationships often begin with a simple conversation. In fact, strong professional networks are widely recognised as a key driver of new opportunities, partnerships, and business growth.

For many businesses, a single workshop can lead to new connections, referrals, or even contracts. It's not just about what you learn it's about who you meet.

Importantly, workshops are not just for large organisations with big training budgets. With accessible, local events and sector-specific sessions available, businesses of all sizes can benefit. Whether you're looking to upskill your team, explore new ideas, or simply step outside your day-to-day routine, workshops provide a valuable space to think differently and act strategically.

Ultimately, workshops represent more than just learning sessions, they are growth environments. They help businesses become more agile, more connected, and more competitive.

So, the next time a workshop opportunity comes your way, don't see it as time away from the business - see it as an investment in it.

Because sometimes, the most valuable work you can do sits outside of your comfort zone... so challenge yourself and step out of the office and into the workshop.

COFFEE MORNINGS



Where every sip sparks inspiration

This year marks the first of many coffee gatherings designed to foster a welcoming, community-driven atmosphere. These gatherings help spark a strong sense of community, highlighting that our centres are more than just buildings—they are active hubs of support, connection, and collaboration.

Business coffee mornings play a vital role in transforming managed workspace centres into vibrant, interactive communities. Often, the most meaningful breakthroughs come from the smallest moments—like a simple conversation over a cup of coffee.

These sessions are now a regular feature, taking place once a month. Team members will be in touch to confirm the dates for each event.



Louis Pearlman Centre

The Louis Pearlman first Coffee Morning, held in February, was a great success. The event brought together licensees from a wide variety of industries, sectors, and backgrounds — all connecting, sharing ideas, and networking as neighbours. Following the positive feedback, the Coffee Mornings will now become a monthly event, taking place on the last Wednesday of every month.

Olivia Zrebiec & Brandon Willby



Craven Park Centre

Our first Craven Park Coffee Morning proved to be a fantastic opportunity for licensees to connect, share ideas, and strengthen relationships across our community.

Jacob McLean



Bespoke Centre

The coffee morning was a great success, bringing together Licensees and Staff alike and showed over half of the businesses occupying the centre represented. The atmosphere was warm and friendly giving those in attendance a relaxed space to socialise and connect. An enjoyable gathering created meaningful conversations and strengthened the sense of community within Bespoke Centre.

Matt Niblett

YOUR BUSINESS MAKE IT OUR STORY

HAVE A STORY TO SHARE? GET IN TOUCH AND FEATURE IN OUR
WEBSITE NEWS SECTION



Hull City Centre
Craven
Training & B
Cent

- Business
- Reception
- Office S
- Training
- Function

FAN EXPERIENCE ZONE
(RETAIL & HOME TICKETS)

Be featured

Want your business story featured
in future editions?

Contact any member of the team to see if your business could featured soon





SUBSCRIBE TO OUR SOCIALS
FIND US ALL IN ONE PLACE!

Follow and say hello!

Louis Pearlman Centre

Goulton Street, Hull



01482 612 478

Bespoke Centre

Zeals Garth, Hull



01482 692 494

Craven Park Centre

Poorhouse Lane, Hull



01482 379 514



MANAGEDWORKSPACE@HULLCC.GOV.UK



WWW.HULL.GOV.UK/COMMERCIALPROPERTY/MANAGED-WORKSPACE-CENTRES

MANAGED WORKSPACE CENTRES

MANAG



WO
Work

WORK

GRANTS AND
FUNDING SUPPORT

BUSINESS
SUPPORT

AVAILAB
UNITS