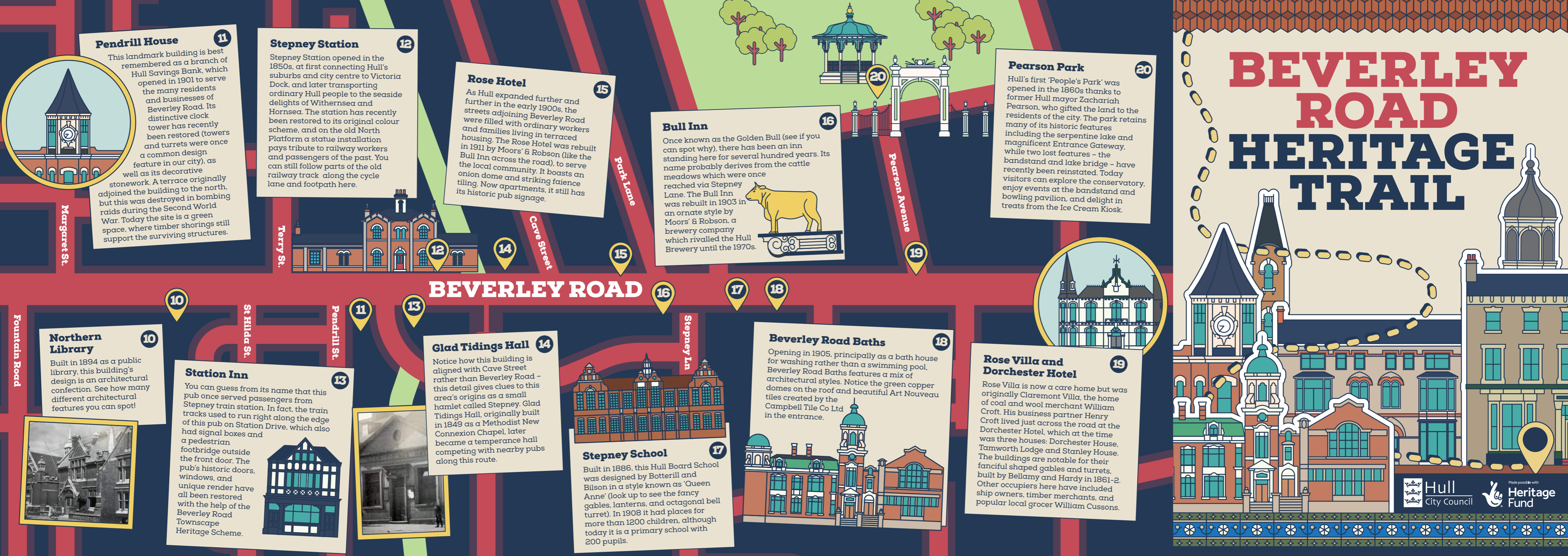


# BEVERLEY ROAD HERITAGE TRAIL



**11 Pendrill House**  
 This landmark building is best remembered as a branch of Hull Savings Bank, which opened in 1901 to serve the many residents and businesses of Beverley Road. Its distinctive clock tower has recently been restored (towers and turrets were once a common design feature in our city), as well as its decorative stonework. A terrace originally adjoined the building to the north, but this was destroyed in bombing raids during the Second World War. Today the site is a green space, where timber shorings still support the surviving structures.

**12 Stepney Station**  
 Stepney Station opened in the 1850s, at first connecting Hull's suburbs and city centre to Victoria Dock, and later transporting ordinary Hull people to the seaside delights of Withernsea and Hornsea. The station has recently been restored to its original colour scheme, and on the old North Platform a statue installation pays tribute to railway workers and passengers of the past. You can still follow parts of the old railway track along the cycle lane and footpath here.

**15 Rose Hotel**  
 As Hull expanded further and further in the early 1900s, the streets adjoining Beverley Road were filled with ordinary workers and families living in terraced housing. The Rose Hotel was rebuilt in 1911 by Moors' & Robson (like the Bull Inn across the road), to serve the local community. It boasts an onion dome and striking faience tiling. Now apartments, it still has its historic pub signage.

**16 Bull Inn**  
 Once known as the Golden Bull (see if you can spot why), there has been an inn standing here for several hundred years. Its name probably derives from the cattle meadows which were once reached via Stepney Lane. The Bull Inn was rebuilt in 1903 in an ornate style by Moors' & Robson, a brewery company which rivalled the Hull Brewery until the 1970s.



**20 Pearson Park**  
 Hull's first 'People's Park' was opened in the 1860s thanks to former Hull mayor Zachariah Pearson, who gifted the land to the residents of the city. The park retains many of its historic features including the serpentine lake and magnificent Entrance Gateway, while two lost features - the bandstand and lake bridge - have recently been reinstated. Today visitors can explore the conservatory, enjoy events at the bandstand and bowling pavilion, and delight in treats from the Ice Cream Kiosk.



**19 Rose Villa and Dorchester Hotel**  
 Rose Villa is now a care home but was originally Claremont Villa, the home of coal and wool merchant William Croft. His business partner Henry Croft lived just across the road at the Dorchester Hotel, which at the time was three houses: Dorchester House, Tamworth Lodge and Stanley House. The buildings are notable for their fanciful shaped gables and turrets, built by Bellamy and Hardy in 1861-2. Other occupiers here have included ship owners, timber merchants, and popular local grocer William Cussons.

**10 Northern Library**  
 Built in 1894 as a public library, this building's design is an architectural confection. See how many different architectural features you can spot!



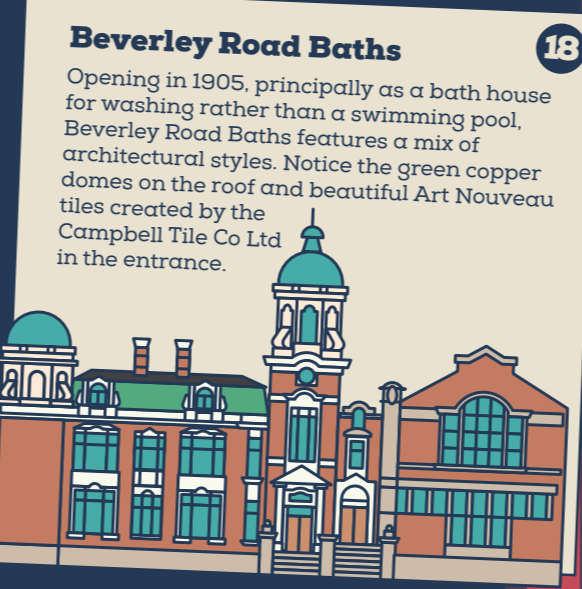
**13 Station Inn**  
 You can guess from its name that this pub once served passengers from Stepney train station. In fact, the train tracks used to run right along the edge of this pub on Station Drive, which also had signal boxes and a pedestrian footbridge outside the front door. The pub's historic doors, windows, and unique render have all been restored with the help of the Beverley Road Townscape Heritage Scheme.



**14 Glad Tidings Hall**  
 Notice how this building is aligned with Cave Street rather than Beverley Road - this detail gives clues to this area's origins as a small hamlet called Stepney. Glad Tidings Hall, originally built in 1849 as a Methodist New Connexion Chapel, later became a temperance hall competing with nearby pubs along this route.



**17 Stepney School**  
 Built in 1886, this Hull Board School was designed by Botterill and Bilson in a style known as 'Queen Anne' (look up to see the fancy gables, lanterns, and octagonal bell turret). In 1908 it had places for more than 1200 children, although today it is a primary school with 200 pupils.



**18 Beverley Road Baths**  
 Opening in 1905, principally as a bath house for washing rather than a swimming pool, Beverley Road Baths features a mix of architectural styles. Notice the green copper domes on the roof and beautiful Art Nouveau tiles created by the Campbell Tile Co Ltd in the entrance.

**Beverley Road is one of Hull's most important historic roads, but this is often overlooked. In fact, Beverley Road has existed for at least 700 years, in that time being home to suffragettes, cinemagoers, shopkeepers and clubbers. It has been the site of influential Hull industries and provided inspiration to musicians, artists, writers and more.**

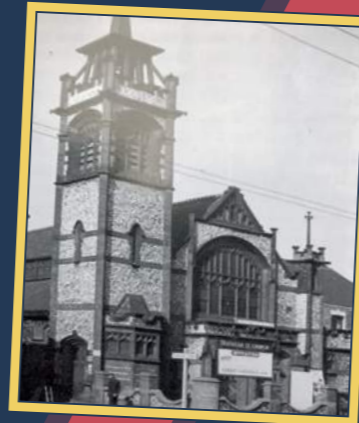
Beverley Road rapidly developed as a suburban area in the 1800s and 1900s. Most of the historic buildings that survive today date from these periods, including everyday homes and impressive public buildings. Although many historic buildings were sadly lost through Second World War air raids and post-war changes, there's still a wealth of historical architecture and social history to explore along the road today.

Since 2015, Hull City Council has been working with local residents and property owners to help protect the heritage of the Beverley Road Conservation Area and celebrate its stories for generations to come. Grants for restoration work, public realm improvements, and community events have been delivered through the Beverley Road Townscape Heritage Scheme, supported by the National Lottery Heritage Fund and National Lottery players.

**For more information and stories, please visit:**

 [facebook.com/bevroadTH](https://www.facebook.com/bevroadTH)

 [twitter.com/bevroadTH](https://twitter.com/bevroadTH)



### Trafalgar Street Church

Designed by George Baines and Son and built in 1904-06, this distinctive Hull building is unique with its flint façade, brick and terracotta details, and octagonal turret. Opened as a Baptist Church, it retains its baptismal pool beneath the floor, and enjoys flowing Art Nouveau decoration inside and out. It will soon become a community arts space and reopen to local residents once again.

### York Parade

One of the first suburban terraces to be built along Beverley Road, these homes date from the 1820s (making them some of the earliest buildings still standing on the road today). Much of the original terrace has been lost or altered over time but here at 53-55, once the home of the owners of Hull Brewery, you can still spot original historic features such as elegant bay windows and columns.



### Lightowler Houses

Taking their name from a firm of local decorators who once occupied them, these houses have recently been restored. Note here the traditional front gardens and railings, once a feature right along Beverley Road. One of the buildings here has been 'listed' since 1994 - see if you can spot which one and why.



### Welly Club

Beverley Road has a rich cultural history and has long been the home and inspiration for musicians and artists. The Welly Club has hosted hundreds of bands and eager clubbers over the years, although in previous lives this site has also been a laundry, a private house, and a hospital. Spot the date stone on the side of the building by looking upwards on Wellington Lane.



## BEVERLEY ROAD

### Beverley Road

Beverley Road now starts here, although it once reached Hull's city centre at Beverley Gate - where King Charles I was famously turned away from the town in 1642. At the time Beverley Road was a rural link road, surrounded by fields, marshland, and hamlets, rather than the vibrant urban thoroughfare we know today.



### Brunswick Arcade

This parade of shops was never a typical arcade. Look for the date stone and the recently recreated façade at numbers 52a-54 to understand how grand the shop frontage would have originally been. The arcade takes its name from nearby Brunswick House, the home of Henry Blundell, whose paint factory famously occupied the corner of Beverley Road and Spring Bank.

### Granville Terrace

This terrace, built in the 1860s, represents upper-middle class living in the 19th century suburbs of Hull. Families living here would have been wealthy enough to have multiple servants, and records from the 1890s tell us that the residents included merchants and mariners. Don't miss the special fruit-themed architectural details on the bay windows and the traditional suburban front gardens.



### Grosvenor House

102 Beverley Road was formerly the home and workplace of Dr Mary Murdoch, Hull's first female GP and a leading local suffrage campaigner. From this location Dr Murdoch set up a school for mothers, fought for women's rights, and provided medical assistance to ordinary Hull people. She was also the first woman in Hull to own and drive a motorcar!



### National Picture Theatre

Said to be one of the last surviving bomb sites in England, the ruins of the National Picture Theatre are a unique piece of our local, national, and international history. The cinema became a victim to bombing raids in March 1941, although luckily the 150 patrons inside survived by taking shelter in the foyer. The ruins will be preserved, and the site will become a memorial and education space focused on civilian experiences of the Second World War.



### Photo credits

Images reproduced with the kind permission of Ian Goldthorpe, Hutton Press, and Wilberforce House Museum: Hull Museums