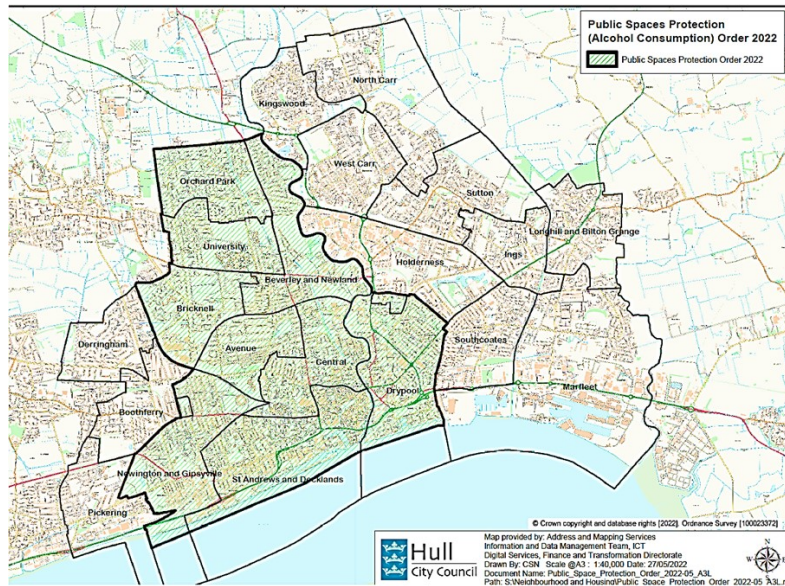


East, West & North PSPO Area Map



Hull City Council Public Spaces Protection Order 2025 (East, West & North)

WITHIN THIS AREA IT IS PROHIBITED TO:



Make any verbal, non-verbal or written request for money, donations, or goods so as to cause or likely to cause anti-social behaviour.



Loiter, sit, or lay on the floor, including doorways or around pay/ cash machines in a manner causing or likely to cause anti-social behaviour.



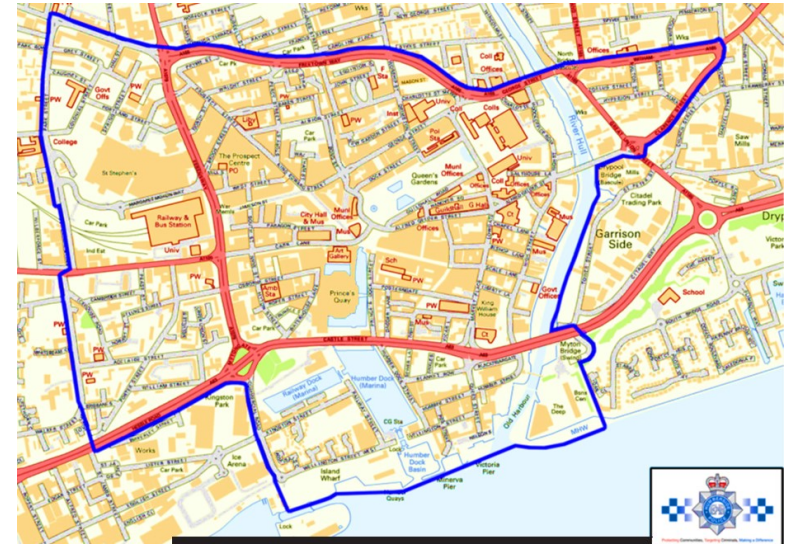
Consume alcohol in any public place anywhere within the PSPO area or be in possession of any opened vessel containing or purporting to contain alcohol.

Failure to comply with the Public Spaces Protection Order can result in the issuing of a **Fixed Penalty Notice of £100** or a **Magistrates Court fine**. For further information about this Public Spaces Protection Order and to see the map of the area it applies to visit: hull.gov.uk and search PSPO.



Safer Entertainment Zone (SEZ)

Map & City Centre PSPO



Hull City Council Public Spaces Protection Order 2025 (East, West & North)

WITHIN THIS AREA IT IS PROHIBITED TO:



Make any verbal, non-verbal or written request for money, donations, or goods so as to cause or likely to cause anti-social behaviour.



Loiter, sit, or lay on the floor, including doorways or around pay/ cash machines in a manner causing or likely to cause anti-social behaviour.



Consume alcohol in any public place anywhere within the PSPO area or be in possession of any opened vessel containing or purporting to contain alcohol.



Remain or return to an area within 48 hours after being requested to leave by an authorised officer, due to causing or likely to cause anti-social behaviour within the PSPO area.

Failure to comply with the Public Spaces Protection Order can result in the issuing of a **Fixed Penalty Notice of £100** or a **Magistrates Court fine**. For further information about this Public Spaces Protection Order and to see the map of the area it applies to visit: hull.gov.uk and search PSPO.



Useful Information and Support Services

Changing Futures

Making Every Adult Matter and Rough Sleeping Team
Hull City Council
The Changing Futures Hub
52 – 54 Beverley Road
Hull
HU2 1YE

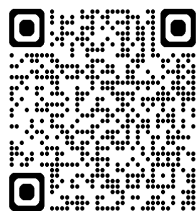
Alcohol & Drug Support

ReNew/Change Grow Live
Trafalgar House
41 – 45 Beverley Road
Hull
Contact Details: 01482 620013

Citizens Advice Bureau Hull & East Riding

The Wilson Centre
Alfred Gelder Street
Hull
HU1 2AG

Scan the QR Code below



Follow the weblink to the PSPO webpage: www.hull.gov.uk/PSPO

Hull City Council Public Spaces Protection Order 2025

East, West & North

What is a Public Spaces Protection Order (PSPO)?

A Public Spaces Protection Order (PSPO) is a tool introduced in 2014 under the Anti-Social Behaviour Crime and Police Act 2014. PSPO orders empower local authorities to address anti-social behaviour (ASB) in specific public spaces within their area.

PSPOs aim to ensure that public spaces can be enjoyed without interference from anti-social behaviour.

Hull City Council Public Spaces Protection Orders

Hull City Council and Humberside Police utilise PSPO's powers to tackle anti-social behaviour in a public space. The PSPOs are put in place to improve the quality of life in communities by restricting or prohibiting certain activities in a public area which have caused the community a detrimental impact.

Where in Hull, are PSPOs in operation?

The East, West & North PSPO covers the following Wards - Drypool, St Andrews & Dockland, Newington & Gipsyville, Avenue, Brickell, Central, Orchard Park, University and Beverley & Newland. An additional prohibition covers what is called the safe entertainment zone/ city centre.

The maps and signs show the exact locations and the types anti-social behaviour not allowed within these areas. :

