

Biodiversity Report 2025- Hull City Council



Section 1: Your policies, objectives and actions

Introduction

Hull's local environment is defined by its constrained administrative boundary, high levels of urbanisation, and limited availability of undeveloped land. Within this compact setting, the city nevertheless contains a range of habitats that provide important ecological functions. The Hull Biodiversity Action Plan identifies several locally significant habitat types—such as estuarine and coastal margins, grasslands, wetlands, and brownfield sites—that continue to support priority species despite fragmentation and development pressures. These habitats contribute to the city's wider environmental resilience, particularly in relation to flood risk management and climate adaptation.

The emerging Humber and East Yorkshire Local Nature Recovery Strategy (HEY-LNRS) places Hull within a wider strategic framework for nature recovery. The strategy recognises the challenges of delivering biodiversity gains in a densely populated urban authority, while also highlighting the opportunity for targeted, high-value interventions. For Hull, this includes improving the condition of existing green and blue infrastructure, strengthening ecological connectivity, and ensuring that local planning, open-space management, and regeneration activity align with nature-recovery objectives. In practice, this approach emphasises quality and connectivity over extensive land use, reflecting the city's limited spatial capacity for large-scale habitat creation.

Aligned with local policy and ecological data, the Hull BAP and the HEY-LNRS establish a coherent direction for conserving and enhancing biodiversity across the city. They provide the basis for identifying priority locations, guiding investment in habitat improvement, and shaping the way the council fulfils its wider responsibilities, including the strengthened biodiversity duty.

Within this context, even modest enhancements to existing spaces can deliver meaningful ecological and community benefits. This report builds on that understanding, setting out Hull's current position and the actions being taken to support a more connected, resilient urban nature network.

Summary of Key Habitats in Hull

Estuarine and Coastal Habitats

Hull's proximity to the Humber Estuary, an internationally designated site, underpins much of the city's ecological value. Though the largest designations lie beyond the boundary, their influence extends into the city through associated habitats and blue/green corridors. These habitats support migratory birds, estuarine fish species, and specialist invertebrates.

Wetlands and Open Water

The city's drainage network, ponds, lagoons, wet grasslands, and engineered water bodies provide important habitat for amphibians, waterfowl, dragonflies, and wetland plants. Many of these sites also serve a dual role in flood storage and surface-water management.

Grasslands

Scattered across parks, road verges, and informal open spaces, Hull's grasslands range from managed amenity grass to areas of species-rich, semi-natural grassland. These support pollinators and form stepping-stones that contribute to wider ecological connectivity.

Woodland and Trees

Although woodland cover is limited, the city's trees—individual specimens, street tree networks, small copses, and older parkland trees—provide essential ecosystem services.

Brownfield and Post-Industrial Land

Hull's brownfield sites often support early successional habitats with a high diversity of plant species and associated invertebrates. These areas can be invaluable in an urban context and are recognised in the BAP as contributing to species-rich, low-nutrient habitats.

Urban Green Infrastructure

Parks, gardens, green roofs, green walls, cemeteries, allotments, roadside verges, and the wider public realm collectively form a mosaic of microhabitats. While individually modest, they play an important role in supporting biodiversity, increasing ecological permeability, and improving access to nature for residents.

Local Nature Reserves in Hull

Hull has two designated Local Nature Reserves, which form core components of the city's ecological network. Noddle Hill Local Nature Reserve, designated in 2011, covers approximately 118 acres and includes wetlands, ponds, wildflower meadows, grasslands, and woodland. The site supports a wide range of notable species including Great crested newts, Grass snakes, Water voles, and specialist invertebrates, reflecting its importance as one of the city's most ecologically diverse areas.

The city's second LNR, Rockford Fields, is an historic meadow landscape located in East Hull, recognised for its long-established grassland communities and associated wildlife. The site contains a rich mixture of species such as Knapweed, Bird's-foot trefoil, red fescue, and the locally rare Crow garlic, as well as supporting Bats, Grass snakes, and a variety of farmland and scrub-edge birds. Historically part of the Sutton Ings pasture system, Rockford Fields has been identified by the Council for protection due to its ecological and cultural value and was progressed toward designation as one of Hull's nature reserves.

Together, these two Local Nature Reserves offer significant biodiversity value within a densely urban authority area, strengthening habitat connectivity and providing important opportunities for nature recovery in line with the Hull BAP and the emerging HEY-LNRS.

Policies and Objectives Supporting Hull's Biodiversity Duty

Hull Local Plan Policies (2016–2032)

Key Local Plan policies include:

- **Policy 42 – Open Space**
Protecting existing open space and ensuring high-quality provision in new developments.

- **Policy 43 – Green Infrastructure and Green Network**
Strengthening ecological connectivity across the city.
- **Policy 44 and SPD 12: Ecology and Biodiversity**

Local Plan Policy 44 sets out the policy framework for protecting and enhancing biodiversity within Hull. It establishes requirements for development proposals to safeguard designated sites at the European, national, and local levels, including Local Nature Reserves and Local Wildlife Sites. The policy also sets clear expectations for the protection of European Protected Species, delivery of biodiversity enhancements, and appropriate management of invasive non-native species. These components ensure that biodiversity considerations are fully integrated into development decisions and that ecological impacts are avoided, mitigated, or compensated in line with national legislation and local priorities.

To support effective implementation of Policy 44, the Council has adopted Supplementary Planning Document (SPD) 12: Ecology and Biodiversity, which provides detailed guidance on how the policy should be applied in practice. SPD 12 expands on the Local Plan by outlining relevant definitions, national and local planning context, survey requirements, and the mitigation hierarchy. It also offers guidance on biodiversity enhancements, biodiversity offsetting, and natural capital approaches. Furthermore, the SPD explains how Policy 44 should be interpreted for specific site categories, including European sites (Ramsar, SPA, SAC), Sites of Special Scientific Interest, Local Nature Reserves, and Local Wildlife Sites.

Together, Policy 44 and SPD 12 form Hull’s principal local policy framework for ensuring biodiversity is properly considered in development proposals. They guide applicants, decision-makers, and land managers in delivering biodiversity net gains, safeguarding key habitats and species, and supporting wider nature-recovery objectives in line with the Hull Biodiversity Action Plan and the emerging Humber and East Yorkshire Local Nature Recovery Strategy.

- **Policy 45 – Trees**
Protecting existing trees and promoting additional planting.
- **Policy 46 – Local Food Growing**
Supporting community growing initiatives linked to wellbeing and ecological benefits.

Objectives

1. “Right to Grow” Initiative

Hull became the first city in the UK to adopt a formal Right to Grow motion in September 2023, granting residents and community groups the ability to grow food on unused council-owned land. This marked a major shift from traditional permission-based access to a rights-based system supporting community-led cultivation.

2. Local Nature Recovery Strategy (LNRS)

Hull contributes to the Humber-wide LNRS, identifying priority areas for habitat creation, restoration, and species recovery.

3. Biodiversity Net Gain (BNG)

Atkins Realis was commissioned by Hull City Council (HCC) to undertake a desk-based Biodiversity Net Gain (BNG) assessment for 69 green open space assets across Hull. The assessment aimed to identify opportunities to enhance biodiversity, inform local ecological priorities, and support evidence-based decisions on safeguarding natural assets within the Local Plan.

This high-level assessment establishes a baseline of existing habitats and provides recommendations to increase biodiversity units across the city. As no field surveys were carried out, all habitat classifications and condition assessments are based on desk-based interpretation and will require future verification through detailed on-site surveys before any BNG delivery can be confirmed.

The assessment follows the reporting framework of the Chartered Institute of Ecology and Environmental Management (CIEEM) and has been completed in line with British Standard BS 8683:2021, which defines BNG as a measurable improvement in biodiversity compared with a defined baseline.

Atkins Realis were also commissioned by Hull City Council to produce a high-level Biodiversity Net Gain (BNG) Strategy for the city's green open spaces, building on recent baseline assessments. The Strategy guided habitat management, enhancement and restoration in line with statutory requirements and the Local Nature Recovery Strategy. It supported prioritising sites for protection under the Local Plan and could have helped secure funding for further work. Wider benefits—such as flood mitigation, health and climate gains—were recognised, though key blue green data was unavailable. The Strategy also informed future habitat banking and S106 processes to deliver BNG across Hull.

4. Open Space Strategy

The Hull Open Space Strategy 2023–2033 sets out Hull City Council's long-term plan to protect, enhance, and adapt the city's parks and open spaces in response to climate change, ecological decline, and growing community needs. The strategy acknowledges the historic importance of Hull's parks as the "green lungs of the city" and outlines a 10-year commitment to raising quality, accessibility, and multifunctionality across the city's open space network.

5. Tree City of the World

Hull's designation as a Tree City of the World reflects the city's long-standing commitment to responsible urban forestry and the sustainable management of its treescape. The recognition is awarded to cities that demonstrate strong urban-tree policies, maintain an effective tree-management framework, allocate dedicated resources, and engage communities in tree planting and care. For Hull, this status aligns closely with the goals set out in both the Hull BAP and the HEY-LNRS, particularly the emphasis on improving the functionality and resilience of green infrastructure within a highly urbanised environment.

Being recognised as a Tree City of the World supports wider biodiversity objectives by highlighting the ecological, climatic, and social value of Hull's urban trees. It also provides a framework that encourages ongoing improvements to canopy cover, better integration of trees

into planning and development, and enhanced community participation in tree stewardship. In the context of the biodiversity duty, this designation demonstrates the council's active role in managing land to conserve and enhance biodiversity, while reinforcing the importance of trees as part of a connected and resilient urban nature network.

6. Green Flag Designations in Hull

Hull is home to two Green Flag–accredited parks: East Park and Pearson Park, both of which have consistently achieved this national standard for well-managed green spaces. The Green Flag Award, administered by Keep Britain Tidy, recognises parks that meet high standards of horticulture, safety, environmental management, and community engagement. These awards demonstrate the city's ongoing commitment to providing quality, accessible green spaces for residents and visitors.

East Park has retained its Green Flag status for multiple consecutive years, reflecting the sustained efforts of council teams and volunteers in maintaining the park's infrastructure, landscape quality, and public facilities. The park is highlighted as a vital space for community recreation, healthy lifestyles, and nature engagement, contributing significantly to the city's wider green-infrastructure network.

Pearson Park, Hull's first People's Park, has also repeatedly secured the Green Flag Award following substantial restoration and continued investment in both its heritage features and natural environment. Recognition of Pearson Park reflects its importance as a historic green space and its value to the surrounding community, with the award signalling that high standards of care, safety and management are consistently met.

The continued achievement of Green Flag status for these two parks demonstrates the city's broader commitment to enhancing urban green space quality. This contributes not only to Hull's ecological network—by providing well-managed habitats and green corridors—but also to the city's ambitions for improved health, wellbeing, and environmental resilience.

7. Hull Biodiversity Action Plan

The Hull Biodiversity Action Plan (BAP) provides a practical, locally focused framework that complements national and regional nature recovery work. It guides how priority habitats and species are managed and supported across the city, working alongside the Local Plan and LNRS.

The Hull BAP highlights a set of habitat types found across Hull, including estuarine areas, freshwater sites, gardens and allotments, grasslands, industrial land, trees and hedgerows, parks and cemeteries, and the built environment. Each habitat type has different ecological pressures, and the BAP identifies opportunities for protection and improvement.

The plan also highlights locally important species such as hedgehogs, tree sparrows, water voles, brimstone butterflies, great crested newts, pipistrelle bats, skylarks, and several wildflower and invertebrate species. Many of these species benefit from the city's mosaic of habitats and can respond quickly to positive management practices.

The BAP is coordinated by the Hull Biodiversity Partnership, a long-established collaboration of local conservation organisations, volunteers, community groups, ecological specialists, and the Council. Their local knowledge supports surveys, project delivery, and advice on biodiversity issues across the city.

8. Hull Nature Trail



The Hull Nature Trail project is an evolving citywide initiative designed to help residents reconnect with Hull's network of green corridors, waterways, parks and semi-natural habitats. Its purpose is to bring attention to the city's lesser-known natural spaces while making them easier and more enjoyable to explore. Hull City Council manages over 500 greenspaces, and the trail network is seen as a way of linking these areas into a coherent whole, encouraging outdoor activity, environmental learning and a stronger connection with wildlife. The long-term vision is to create accessible walking and cycling routes that weave through parks, pathways and transport links, forming a joined-up green infrastructure across the city. This approach also supports wellbeing and education by guiding people through historic walking routes and landscapes rich in biodiversity. It is being delivered in partnership with organisations such as the Environment Agency, Yorkshire Wildlife Trust, Groundwork and Living with Water, all of whom have contributed to planning, ecological improvements and public engagement.

The most recent and first completed section of the Hull Nature Trail is the pilot route along the Holderness Drain, opened in late October 2025. This 1.2-mile stretch near Exeter Grove marks the beginning of the wider citywide network and showcases how future sections will be developed. The path runs alongside newly established linear parks and features a series of enhancements aimed at improving both accessibility and the ecological value of the corridor. These include newly planted fruit trees, new seating areas that provide places to pause by the water, and a set of distinctive portal stones that act as subtle trail markers. The route also incorporates fishing access points, including two purpose-built fishing pegs positioned within a semi-mature willow and alder copse, creating a calm, shaded space for visitors to enjoy.

Community involvement was central to the section's launch. Councillor Charles Quinn, the council's portfolio holder for environment, officially opened the trail, and local families were invited to explore the new route through guided walks and hands-on activities. These included nature-themed arts and crafts with Rewilding Youth, animal-themed creative sessions with Hull Scrapstore and a children's trail with clues hidden along the walk to encourage younger visitors to engage with the landscape. The council has emphasised that this opening is just the

beginning of a much larger programme, with plans to expand the network across Hull by the following spring and summer, linking parks and transport routes into a more extensive and user-friendly outdoor network.

9. Humber Forest

The Humber Forest, the community forest for Hull, East Yorkshire, and North Lincolnshire, is a major regional tree-planting initiative aimed at increasing canopy cover, boosting biodiversity, and improving climate resilience across the Humber area. It supports landowners, schools, farmers, communities, and businesses to plant trees and hedgerows at no cost, offering grants that cover up to 100% of planting and establishment costs.

Examples of Completed Actions That Benefit Biodiversity

1. Habitat Creation & Enhancement

- Wildflower meadows created within parks, verges, and open spaces.
- Grassland areas managed to encourage species-rich meadows.
- Native hedgerows planted to strengthen habitat connectivity.

2. Tree & Woodland Improvements

- Planting of native trees across parks and streets.
- Veteran tree management to support bats, birds, fungi, and invertebrates.

3. Species-Focused Conservation Actions

- New bird and bat boxes installed across public land and community spaces.
- Hedgehog highways created through fence modifications.
- Species-specific management plans introduced where priority species are present.

4. Planning & Development Influence

- Ecological enhancements secured through the planning process.
- Biodiversity Net Gain delivered through site-specific conditions.
- Nature-inclusive design features integrated into development layouts.

5. Green Infrastructure Improvements

- Habitat improvements along key green corridors, including riversides and cycle routes.
- Wildlife-sensitive SuDS installed, including wetlands and wet meadows.
- Invasive species management undertaken at priority locations.

Section 2: Your future actions**Five-Year Plan to Fulfil the Biodiversity Duty**

Theme / Duty Requirement	Planned Actions (Next 5 Years)	Lead Service / Partners	Expected Outcomes	Monitoring Method
1. Consideration of Functions	Embed biodiversity considerations into all relevant council functions, Streetscene, planning, flood risk management, parks, property, highways, and regeneration.	Streetscene, Planning, Flood Risk, Major Projects, Housing	Consistent application of biodiversity principles across decisions and operations.	Annual review of decision-making processes; cross-departmental reporting.
2. Policies and Objective Setting	Update or develop supporting policies (e.g., Open Space Strategy actions, Tree Policy, Planning Guidance, LNRS alignment statements). Ensure BAP priorities are incorporated.	Streetscene, Planning Policy	Policies explicitly aligned with biodiversity duty and LNRS priorities.	Policy audit every 2 years; updates reported to Cabinet/Committee.
3. Land Management for Biodiversity	Enhance habitat quality in parks, open spaces, cemeteries, verges, and wetlands. Increase species-rich grassland areas and appropriate meadow cycles; implement tree-management improvements and new canopy opportunities.	Streetscene, HCAL, Volunteers, Community Groups	Improved habitat condition; increased pollinators; stronger ecological connectivity.	Annual habitat-condition assessments; GIS mapping of management changes.
4. Tree Management and Tree City of the World Commitments	Maintain and improve urban tree cover; undertake structured planting; strengthen tree-risk management; promote community tree planting.	Streetscene, Arboriculture Team	Increased canopy cover, healthier trees, and stronger public participation.	Tree inventory updates: annual canopy-cover estimation.

OFFICIAL

5. Nature Recovery (LNRS Implementation)	Deliver locally relevant LNRS opportunities: habitat restoration, corridor strengthening, wetland enhancements, and small-scale urban nature interventions.	Streetscene, Planning, Flood Risk, HEY Nature Partnership	Measurable contributions to regional nature recovery priorities.	Project-level reporting; contribution statements in next Duty Report.
6. Biodiversity Net Gain (BNG) Integration	Ensure BNG is consistently applied to planning proposals; update internal processes; develop monitoring framework for off-site and on-site BNG delivery.	Streetscene, Planning Development Management, Ecology Advisors	Improved habitat units secured through development; better long-term monitoring.	Annual BNG monitoring report; register of allocated sites.
7. Education, Awareness & Engagement	Provide training for staff and elected members on biodiversity duty; promote public engagement through events, interpretation, and volunteer programmes.	Streetscene, Communications, Parks, Local Groups	Increased organisational and community understanding of biodiversity.	Attendance records; engagement metrics; annual training evaluation.
8. Data, Evidence & Monitoring	Improve habitat, species and GIS datasets; integrate data from surveys, volunteer records, and project monitoring.	Streetscene, GIS, Local Record Centre	Stronger evidence base supporting decisions and reporting.	Annual dataset updates and reporting.
9. Reporting & Governance	Produce the next biodiversity duty report within the statutory timeframe; establish an internal working group to oversee progress.	Streetscene, Policy, Senior Management	Transparent reporting; coordinated progress across services.	Annual internal progress statement; 5-year statutory report.

OFFICIAL

Over the next five years, the Council will take a coordinated and structured approach to fulfilling its strengthened biodiversity duty. This plan builds on our existing strategies, including the Hull Biodiversity Action Plan, the developing Humber and East Yorkshire LNRS, the Open Space Strategy, and our commitments as a Tree City of the World. The focus is on embedding biodiversity considerations into the full breadth of council functions, improving the condition and connectivity of key habitats, and ensuring that our actions contribute meaningfully to local and regional nature recovery.

A central part of this approach involves reviewing how biodiversity is considered across all operational areas. By integrating biodiversity at the earliest point in decision-making, the Council can ensure that ecological opportunities are identified and acted upon consistently.

To support this, relevant policies and guidance will be updated or developed to reflect current statutory duties and strategic priorities. This includes aligning with LNRS objectives, strengthening internal planning guidance, and ensuring that BAP priorities are embedded into operational and project-level work. These policy updates will set out clear expectations for how biodiversity is to be managed, monitored, and enhanced across different service areas.

Land management will continue to play a major role in meeting our biodiversity duty. The Council will invest in improving the ecological quality of its parks and open spaces, wetlands, roadside verges, and other public land. This will include increasing species-rich grassland, enhance wetland and marginal habitats, and improve the management of trees and woodlands across the city. Our ongoing commitment as a Tree City of the World supports this work by providing a framework for expanding and caring for our urban treescape, promoting canopy cover, and engaging communities in tree stewardship.

The Council will focus on projects that strengthen ecological corridors, enhance existing habitats, and contribute to flood resilience and climate adaptation. In parallel, the effective implementation of Biodiversity Net Gain within the planning system will ensure that new development contributes positively to long-term habitat improvement.

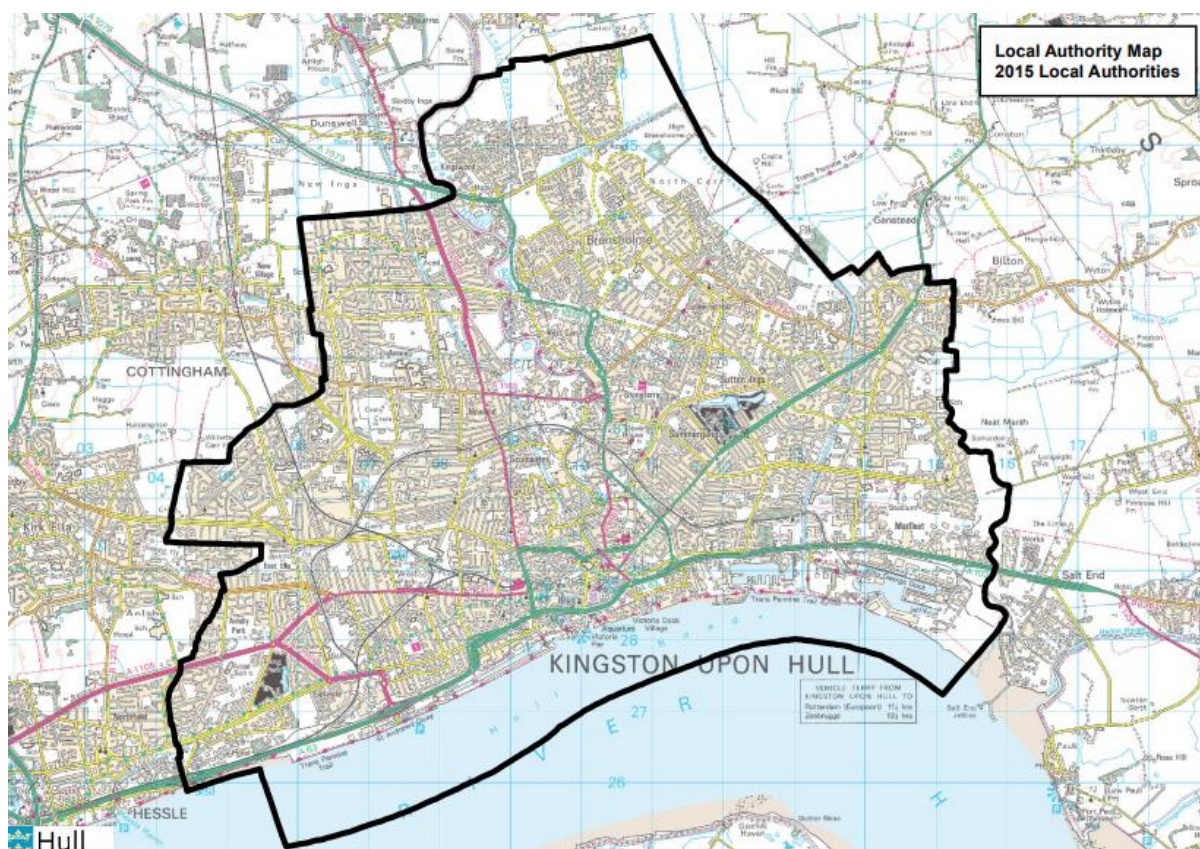
Community engagement, education, and awareness will remain essential components of the Council's approach. By working with local groups, volunteers, partners, and residents, we aim to build a broader understanding of biodiversity and supporting activities that enable people to contribute directly to nature recovery across the city.

Finally, the Council will improve its use of ecological data and evidence by strengthening habitat and species records, enhancing GIS mapping, and developing clearer reporting frameworks. At the end of the cycle, the Council will report formally on actions taken, outcomes delivered, and next steps for the subsequent reporting period.

OFFICIAL

Section 3: Biodiversity net gain information

As explained in previous sections Hull is a densely populated urban authority with tight boundaries around the city. This means there is a limited amount of open space which is not part of the developed extent of the city. The open spaces within the city are multi-functional providing, habitat and ecology, climate adaption measures, community spaces, amenity, recreation and water quality benefits. In addition to this there are housing targets, demand for economic growth and need for employment land which all increase the pressure on biodiversity and nature.



The Hull and East Yorkshire Local Nature Recovery Strategy highlights the challenges this can cause in terms of the demands and the space for nature and biodiversity. Despite this the LNRS also recognises there is diverse range of opportunities for nature recovery despite being dominated by man-made structures. Urban wildlife varies according to local landscape features but can thrive when supported by well-designed green and blue infrastructure. The key points are that even heavily built urban spaces can host a variety of habitats and species. Buildings, gardens, old walls, railways, brownfield sites, waterways and street trees all contribute to ecological networks. Connectivity is crucial to help urban nature link with the wider countryside.

OFFICIAL

With these constraints and opportunities, it demonstrates the importance of the principles of BNG in not only protecting the precious existing ecology but also increasing and providing those links to ensure it thrives and increases.

Generally, across the development sector in Hull there has been limited understanding and implementation of BNG through the development process. It is important to note that due to local constraints such as contaminated land, high flood risk and density requirements because of limited space in the city, the cost of development in Hull is high in comparison to the return as property prices are generally lower than the national average. This often means development is only viable with public subsidies or support. Due to the urban environment and typology of land available the BNG principle should be relatively simple. The limited higher value habitat must be retained as habitat, or it renders the development unviable. This correctly pushes developers and the Local Planning Authority for decisions on land allocations, to the less valuable land for ecology.

To help with the understanding of BNG Hull City Council has undertaken several pieces of work. These are:

- Used Natural Environment Investment Readiness Funding (NEIRF) to create a Sustainable Drainage (SuDs) BNG toolkit.
- Produced a funding report to assess the financial implications of BNG in relation to the Living with Water 25-year Blue Green Plan.
- Piloted this approach by incorporating BNG into 5 small SuDs retrofits in Derringham, Hull.
- Surveyed 69 of the council owned open spaces to provide a BNG baseline
- RAG rated the 69 sites in terms of BNG potential for habitat banks
- Produced guidance documents both for internal council teams and developers to help raise awareness and understanding
- Held a workshop with council teams including councillors to embed the process within existing systems, policies and ground maintenance routines
- Gained consent from Cabinet to create a dedicated BNG ecologist post

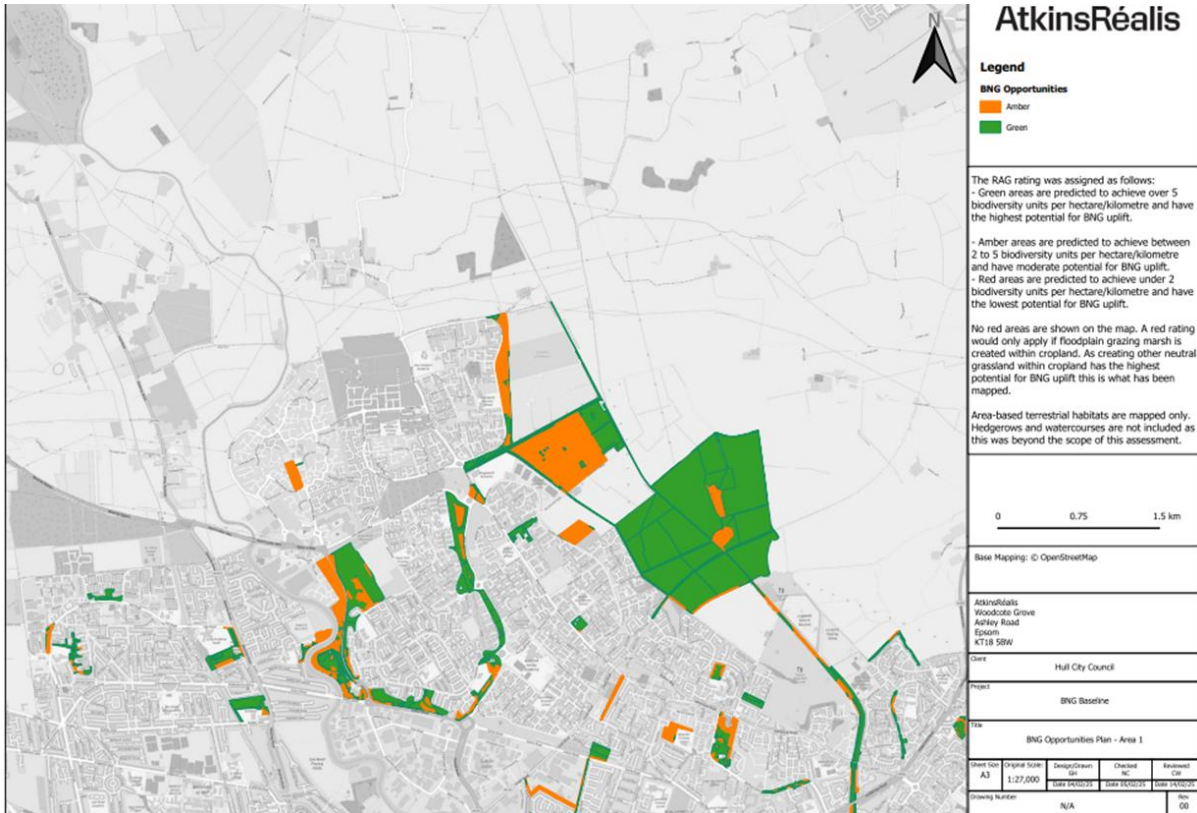


Biodiversity Net Gain and Sustainable Drainage Systems Toolkit

This is a high-level prospectus/catalogue that identifies the BNG benefits of different SuDS assets and how to maximise them. It is a practical guidance document that is aimed at users with an existing level of understanding of the concepts. It does not include detailed explanations of concepts or illustrative design examples.



Member of the SNC-Lavalin Group



Example of the RAG mapping exercise



Example of BNG incorporated into a SuDs retrofit at Primrose Drive, Derringham Hull.

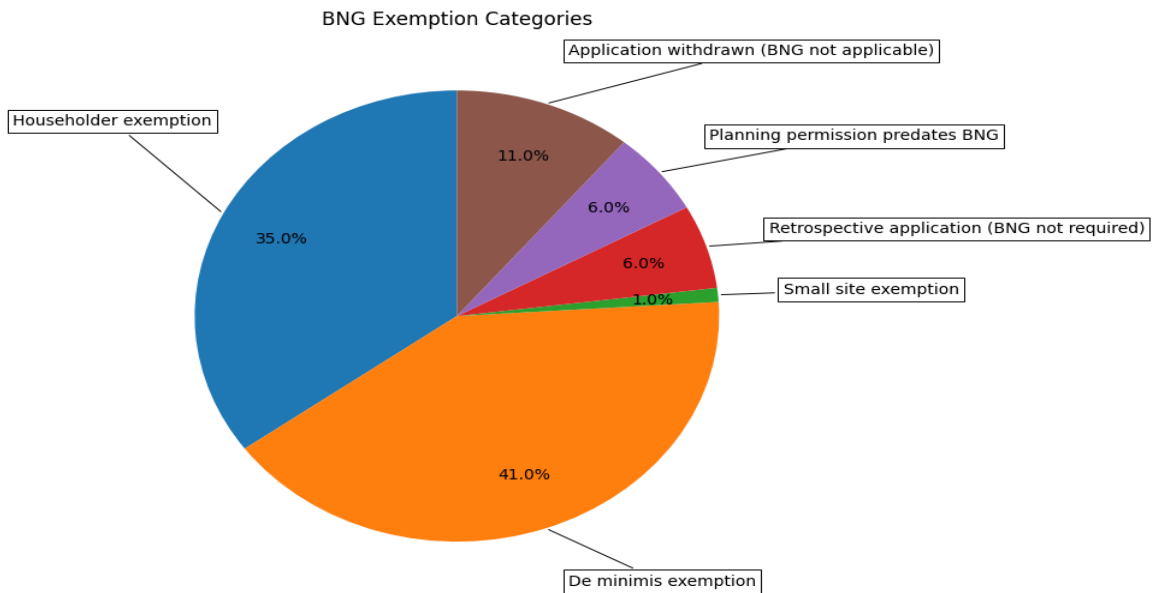
Interpretation boards and community acceptance are key to these schemes.

As a Local Planning Authority Hull City Council have implemented monitoring BNG through the recruitment of one of the “300 planners”. A spreadsheet has been produced which has recorded 787 planning applications in the time period 1st April 2024- 10th December 2025. In terms of a breakdown of the applications in relation to BNG:

1. BNG liable vs BNG-not-liable counts

Category	Count	%
BNG liable	44	
BNG not-liable		
Total		100%

Exemption Reason	%
Householder exemption	35%
De minimis exemption	41%
Small site exemption	1%
Retrospective application (BNG not required)	6%
Planning permission predates BNG	6%
Application withdrawn (BNG not applicable)	11%
	100%



3. BNG management plans

Submitted	1
Awaiting	43
Total	44



Section 4: How you have considered other strategies

Hull is the joint local authority partner in the Hull and East Yorkshire Nature Recovery Strategy partnership and officers across open spaces, biodiversity, flooding and climate change have been part of the development of the plan sitting on various workshops and steering groups.

The ecological emergency is also key to both the Community Plan for the city of Hull as well as the Hull City Council Plan with Ambition 5 “Responding to the Climate and Nature Emergency” integral. The Nature Recovery Strategy and Ambition 5 have both influenced the strategic approach of the authority and are informing the emerging Local Plan as well as the new Hull City Council Climate and Nature Strategy and Action Plan. Within the strategy biodiversity is one of the four strategic themes with actions to deliver improved natural environments within the city alongside a new biodiversity action plan. In addition, the new Open Spaces Strategy and Blue-

Green Plan have integrated biodiversity within their design and delivery and the authority is taking an “integrated triplet approach” to flood, environmental and climate work seeking that whichever is the lead intervention for a project that in draws in the other areas of work to maximise impact and deliver high value (finance/biodiversity/flood adaptation/carbon sequestration) for investment .

Section 5: How you’ve raised awareness and educated the community

Community & Partnership Projects Supporting Biodiversity

Hull benefits from a wide range of community-led and partner-supported biodiversity projects that complement formal policy and habitat management.

Postcode Gardener Projects – Bransholme and Orchard Park

Two community gardening initiatives, funded through Friends of the Earth and the Co-operative Bank, support residents in increasing biodiversity across both areas. Each project aims to restore wildlife to around 50 local sites, working directly with volunteers, schools, and neighbourhood groups.

Work at the Orchard Park HOPE Allotment includes creating a pond, hibernaculum, small orchard, harvest hedgerow (supported by the Woodland Trust), and growing beds managed jointly with local schools. In both Postcode Gardener areas, planters, bird boxes, bulbs, wildflowers, shrubs, and trees are being added, with further mini-meadow areas planned. Regular wildlife talks also support community learning.

Right to Grow - Pollinator and Wildflower Sites

Several wildflower and pollinator-friendly plots are already established across Hull, supported by Right to Grow agreements that provide secure community access to underused land.

Community Wildlife Installations and Local Projects

- Over **40 bird boxes** installed in Hull General Cemetery, checked annually by trained volunteers.
- A **Songbird Garden** created at the Alf Marshall Community Centre in Bransholme, using elements from a Chelsea Flower Show garden.
- **R-evolution** coordinates nine weekly volunteers to maintain the grounds of Holderness House, develop a community allotment area, replant historical species, and provide free horticultural training.

Awards and Recognised Community Spaces

- Rainbow Community Garden achieved a Green Flag Community Award.
- Community involvement contributes each year to the City Nature Challenge, an international biodiversity recording event.
- Ongoing community-led work at Alderman Kneeshaw Park supports habitat improvements.

Youth and Outdoor Learning Initiatives

- Rewilding Youth engages young people with nature-based activities at East Hull Community Farm, offering hands-on experiences such as fire-lighting, campfire cooking, crafts, and woodland skills.
- Northern Wildings runs similar immersive outdoor sessions for children and young people.

Species and Habitat Projects

- Butterfly City distributes free buckthorn plants to support the Brimstone butterfly.
- Free guided wildlife walks—covering bats, birds, trees, and foraging—are delivered by Friends of Pearson Park volunteers.
- Locally produced honey comes from hives at Rooted Urban Community Garden, Pickering Road Community Orchard, and Pearson Park Community Garden.
- Friends of Garrowby Orchard continue to manage and enhance Garrowby Orchard.
- Yorkshire Wildlife Trust and West Hull Rugby Club collaborate on the 30:30 project supporting community-based habitat improvements.

Support for Community Growing & Greening

- Community groups receive free compost, planters, and water butts to support local greening projects.
- Child Dynamix's Blue Influencers and Yorkshire Wildlife Trust's #TeamWilder Community Champions deliver youth and neighbourhood-based biodiversity projects, including growing and nature-based work at Marfleet Allotments.
- Numerous Love Your Street groups contribute through regular community litter picking, supporting cleaner, healthier wildlife habitats.

Section 6: Biodiversity highlights and challenges

This section just summarises issues raised in the rest of this report in regard to the specific highlights and challenges.

OFFICIAL

As explained Hull is a densely populated urban environment with a population of 275,401. It's ranked the 4th most deprived Local Authority in the Index of Multiple Deprivation. This is due to low incomes, crime and barriers to housing and an unemployment rate of 8.1% which is higher than the national average. The housing stock type is 53% terraced which is also higher than the national average (England 26%) and means that many people do not have access to private gardens.

This all demonstrates that the parks and open spaces within the city have high demand providing people with that access to nature and recreation. This obviously then brings the challenges of securing and maintaining areas for ecology and wildlife whilst also coping with the close proximity of people. Challenges such as litter, fly tipping, fly grazing of ponies, vandalism, obsession with parking and off-road bikes/cars are frequent and need to be factored into any designs and maintenance of the parks and green open spaces.

Despite this these are a few highlights we would like to share.

- The council has for successive years been awarded Tree Cities of the World status. This is because the city can demonstrate a long-standing commitment to responsible urban forestry.
- The council has a Right to Grow motion which encourages communities to take on underused pieces of council owned land and establish them as areas for growing food or plants which add amenity and attractiveness to the local environment.
- Working with the Living with Water team we have looked to align objectives to create nature-based solutions which deliver multiple benefits
- We have recognised the strong role communities play in creating a green future and we have specific officers in the council dedicated to the community engagement for a resilient, sustainable blue green city.
- Green flag parks which acknowledges the cities ongoing commitment to providing quality, accessible green spaces for residents and ecology.



Example of a SuDs/habitat planter with installed in Hull on schools, the station and high streets.