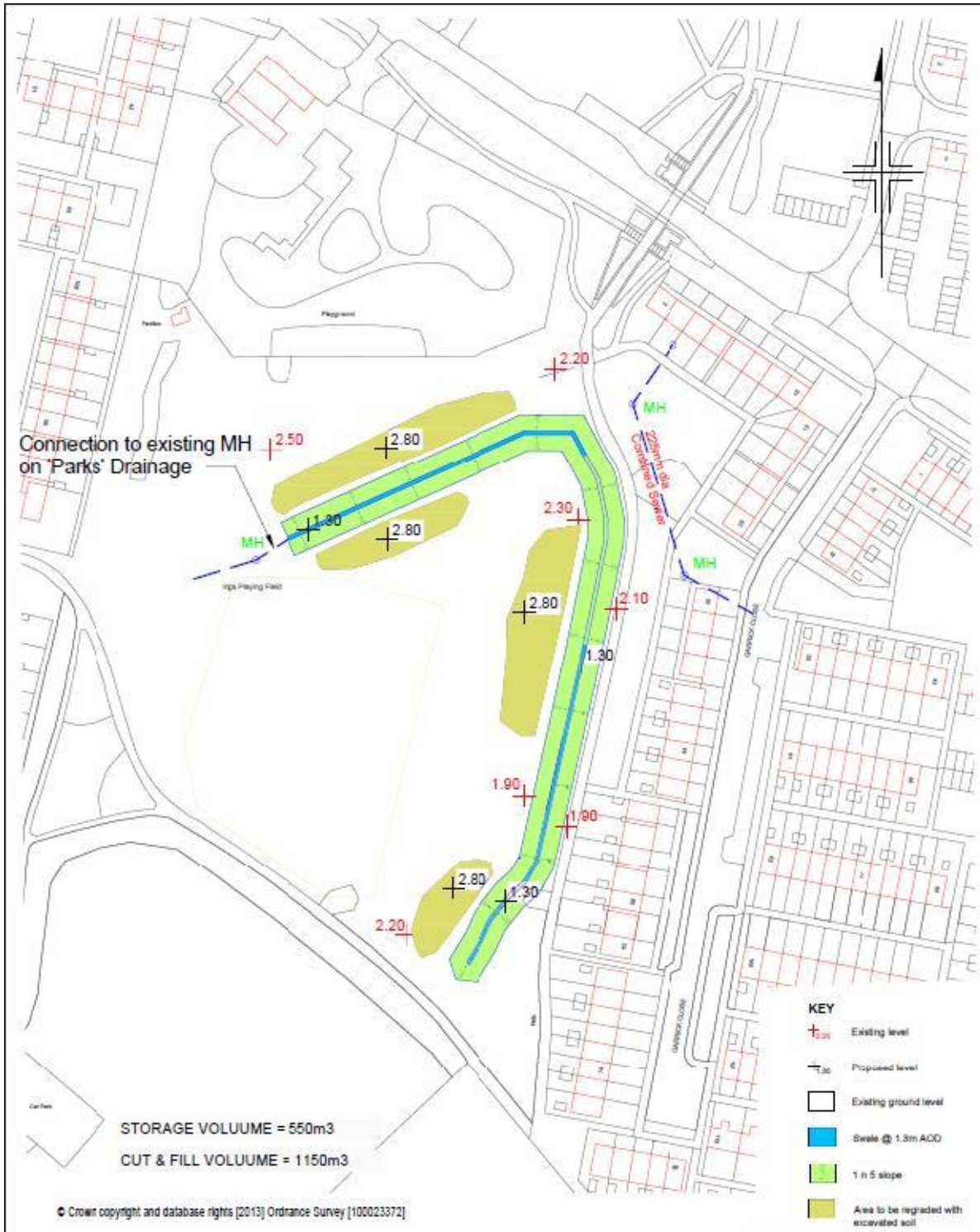




Lambwath Stream Flood Alleviation Scheme, Ings Playing Field, Bellfield Avenue



Drawing Number 931/106/01/001		Rev. A	Drawing Title LAYOUT	  ISO 9001:2000 PF 34524
Drawn By AK	Checked AK	Date Apr 2015	Scheme LAMBWATH STREAM FLOOD ALLEVIATION SCHEME	
Scale 1:1000 @ A3				
Rev. A	By AK	Date Sep 15	Description Issue amended	

Alan Coll
City Planning Manager
Phone: 01482 522200
M: 07778 511111

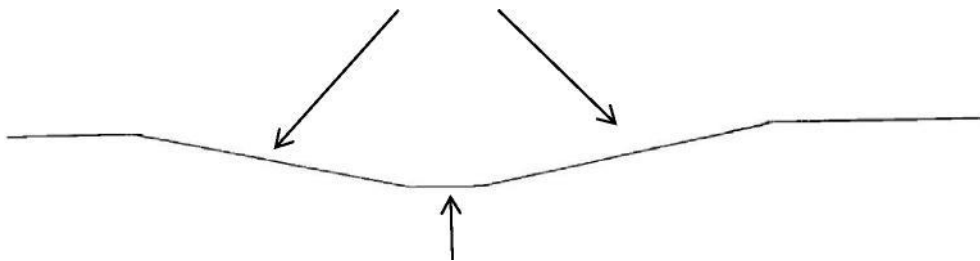
What is a Swale?

In Sustainable Drainage terms, a swale is a ditch which is usually dry, but which in times of heavy rain fills with water, reducing the pressure on the surrounding area, and on the drainage system. The swale on Ings Playing Field will have a connection to the existing sewer so that it can discharge into it when water levels start to reduce.



New swale on Howdale Road awaiting seeding

1 in 5 slope allows grass cutting
with standard mowing equipment



Base of swale 0.6m below
the adjacent ground