

+

KINGSTON UPON HULL CITY COUNCIL

**HIGHWAY**

**WINTER SERVICE PLAN**

**(FOR THE ADOPTED HIGHWAY NETWORK)**

Festival House  
Jameson Street,  
Kingston upon Hull, HU1 3JJ.

**Updated July 2020**

**HIGHWAY WINTER SERVICE PLAN**

**CONTENTS**

NOT A CONTROLLED DOCUMENT IF PRINTED

Highway Winter Service

Page	Part	Title
2		Contents
4		Introduction
<b>Section A Statement of Policies and Responsibilities</b>		
6	Part 1	Policies and objectives – Statement of Service
7	Part 2	Client and contractor risks and responsibilities
10	Part 3	Partnership or shared risks and responsibilities
10	Part 4	Decision making processes
20	Part 5	Liaison arrangements with other authorities
22	Part 6	Winter risk period
23	Part 7	Reciprocal Agreement with the East Riding of Yorkshire Council
<b>Section B Quality Plan</b>		
25	Part 1	Quality management regime
25	Part 2	Document control procedures
25	Part 3	Circulation of documents
26	Part 4	Information recording and analysis
27	Part 5	Arrangements for performance monitoring, audit and updating
<b>Section C Route Planning for Carriageways, Footways &amp; Cycle Routes</b>		
29	Part 1	General
29	Part 2	Carriageway routes for precautionary treatment
38	Part 3	Carriageway routes for post treatment by risk level
43	Part 4	Carriageway routes for snow clearance by risk level
46	Part 5	Routes for footbridges, subways and other high risk pedestrian areas
47	Part 6	Routes for other footway treatment by risk level
55	Part 7	Routes for cycle route treatment by risk level
56	Part 8	Response and treatment times for all carriageway treatments
56	Part 9	Response and treatment times for footway and cycle route treatments
56	Part 10	Allocation of plant, vehicles, equipment and materials to routes
56	Part 11	Location and maintenance of salt bins and grit heaps
<b>Section D Weather Prediction and Information</b>		
59	Part 1	Forecasting, inspections and other decision support information
62	Part 2	Information to be provided
63	Part 3	Timing and circulation of information
63	Part 4	Reporting procedure
63	Part 5	Maintenance of Ice detection equipment
<b>Section E Organisational Arrangements and Personnel</b>		
65	Part 1	Organisation chart and employee responsibilities
65	Part 2	Employee roles and responsibilities
66	Part 3	Schedules of Contract and Voluntary Personnel (CVP)
66	Part 4	Contact and commissioning arrangements for CVP
66	Part 5	Training and development arrangements
67	Part 16	Health and safety procedures
<b>Section F Facilities, Plant, Vehicles and Equipment</b>		
69	Part 1	Fleet inventory including licence requirements and capacity
69	Part 2	Location of plant, vehicles and other equipment
69	Part 3	Garaging, servicing and maintenance arrangements
69	Part 4	Contact and hire arrangements for contract plant

Highway Winter Service

70	Part 5	Calibration procedures
70	Part 6	Fuel stocks and locations
<b>Section G salt and other De-icing Materials</b>		
72	Part 1	Location and capacity of stocks for salt and other materials
72	Part 2	Testing arrangements
72	Part 3	Loading arrangements
72	Part 4	Treatment requirements including spread rates
74	Part 5	Contacts for purchasing arrangements and supplies
<b>Section H Operational Communications</b>		
76	Part 1	Reporting arrangements and protocols
76	Part 2	Standing proformas to be used
<b>Section I Information and Publicity</b>		
78	Part 1	Publicity
78	Part 2	CRM Centre
79	Part 3	Local press and broadcast information
79	Part 4	Other key local and national contact information
79	Part 5	Responsibilities and guidance for providing information

Highway Winter Service

## **Highway Winter Service**

### **Introduction**

This Highway Winter Service Plan is based on the recommendations in the code of practice for Maintenance Management July 2005 and subsequent updates by the Roads Liaison Group which replaces the 2001 Code of Practice "Delivering Best Value in Highway Maintenance".

It is noted that on 31<sup>st</sup> October 2003 Clause 111 of the Railway and Transport Safety Bill came into force since when provision of a Highway Winter Service became a Statutory Duty.

This Clause amended the Highways Act 1980 by adding Clause 41 (1) which reads;

**"In particular, a Highway Authority are under a duty to ensure, as far as is reasonably practicable, that safe passage along a highway is not endangered by snow or ice."**

The "Highway Winter Service" is reviewed annually and updated before the start of winter.

**SECTION A**

**STATEMENT OF SERVICE**

**AND**

**RESPONSIBILITIES**

<b>Page</b>	<b>Part</b>	<b>Title</b>
6	Part 1	Policies and objectives – Statement of Service
7	Part 2	Client and contractor risks and responsibilities
10	Part 3	Partnership or shared risks and responsibilities
10	Part 4	Decision making processes Decision Making Matrix – Precautionary Salting & Snow Clearance Page 15 Decision making Matrix - Salt Spreading Page 17 Decision Making Chart – Footways and Pedestrianised Areas Page 18 Decision Making Chart – Cycle Routes Page 19
20	Part 5	Liaison arrangements with other authorities
22	Part 6	Winter risk period
23	Part 7	Reciprocal Agreement with the East Riding of Yorkshire Council

**Section A Part 1 Policies and Objectives**

**STATEMENT OF SERVICE**

1. Hull City Council as the Local Highway Authority for the City of Hull acknowledges it has a duty under Section 41 of the Highways Act 1980 to ensure that as far as is reasonably practicable snow and ice does not endanger users of the highway. It aims to discharge this duty by provision of a Highway Winter Service as detailed in this plan.
2. The objective of the service is, as far as reasonably practicable, to mitigate the effects of the formation of ice on the more important parts of the highway network. This will ensure as safe a journey as possible for the travelling public and minimise delays and accidents directly attributable to adverse weather conditions.
3. This service will consist primarily of carrying out precautionary salting on “defined roads” to the standard detailed in Section A, Part 2. The “defined roads” are listed in Section C and include principal roads, selected distributor roads and regular bus routes.
4. The response time from the decision to commence immediate treatment of precautionary routes shall be one hour. The target time to complete these routes is three hours from commencing treatment. All “defined roads” shall normally be treated by the start of the working day (07.30 hours).
5. Post salting will be carried out to the standard detailed in Section A part 2 on the designated secondary roads listed in Section C when at 07.30 hours snow or ice is present and is forecast to persist for at least a further 24 hours. These are less important distributor and access roads, remaining bus routes and roads serving local shopping areas and schools. During prolonged spells of snow or ice the remainder of the adopted highway network will be treated where appropriate and practicable.
6. Post salting of footways and pedestrian areas will normally be confined to the defined routes within the City Centre, other main shopping areas and foot bridges and the most important pedestrian routes. These routes are listed in Section C. During prolonged periods of freezing other footways and pedestrianised areas will be treated with priority being identified on a daily basis and based on local needs.
7. Post salting of cycle routes will normally be confined to main links to the city centre and these are listed in Section C.
8. There is a duty under the Highways Act 1980 Section 150 to remove snow from the highway where it is causing an obstruction. Snow clearing will be carried out throughout the network where appropriate and practicable. Priorities will be determined by prevailing conditions. During severe snow conditions priority will be given to clearing and treating the strategic routes listed in Section C.

**Section A Part 2 Client and Contractor Risks and Responsibilities**

**2.1 General Responsibilities**

2.2 Kingston upon Hull City Council is the Local Highway Authority for adopted roads within the Hull City Boundary other than for the A63 and A1033 Trunk Roads. Trunk roads are the responsibility of Highways England and are administered by their agents. The East Riding of Yorkshire Council is the only other Highway Authority with shared boundaries. A list of roads with highway boundaries in common is included in Section A paragraph 5.2.

Hull City Council liaises with these two adjacent Highway Authorities to ensure that the travelling public can rely on a consistent level of treatment.

2.3 The City Council takes its “Highway Winter Service” responsibilities extremely seriously and aims to organize and operate a system capable of providing a Service to the Standard set out in “The Statement of Service”.

2.4 This Highways Winter Service Plan provides the framework to meet statutory duties and to deliver the service in the most economic, efficient and effective way.

For operational purposes this Highway Winter Service Plan should be used with reference to the Highway Winter Service Operational Manual the Code of Practice for Maintenance Management (July 2005) and subsequent updates as published by The UK Roads Liason Group along with guidance provided by The National Winter Service Research Group (NWSRG)

Commented [TR1]: Check update and include

Commented [CP2R1]:

Commented [CP3R1]:

**2.6 The Responsibility of the Head of Service, Highway Operations, Structures, Safety and Emergency Planning**

The City Engineer, Bridges, Structures & Resilience is responsible for organising and overseeing the Highways Winter Service. This includes:

a	Designing a Service to cope with an average winter but having the capability to be extended or adapted when winters are more severe or of longer duration than average.
b	Production and distribution of the Highway Winter Service Plan and Operations Manual.
c	Carrying out an annual review of all aspects of the service and updating the Highway Winter Service Plan and Operations Manual.
d	Maintaining membership of the National Winter Service Research Group to establish best practice in all areas of the winter service and take action to introduce such measures to the service in Hull.
e	Liaising with adjacent highway authorities in the preparation of the Winter Plan to ensure continuity of service across highway boundaries, including establishing “24 hour operational” contact numbers for the winter period.
f	Providing the Winter Service Operations Manager with routes including those for precautionary and post salting and those for priority during extreme conditions.

Highway Winter Service

g	Providing the Winter Service Operations Manager with lists of footways, pedestrian areas and cycle routes for priority post salting treatment.
h	Providing "Decision Making Matrices", advice and guidance for the Winter Service Operations Manager, and Supervisors.
i	Liaising with the Winter Service Supervisors to provide help and advice to ensure the Service is delivered in the most effective, efficient and economical way, including establishing operational priorities during extreme or prolonged severe weather conditions.
j	Establishing contact numbers for access to Emergency Services Control Rooms, Public Transport Operators, local media and the motoring organisations.
k	Passing of factual information on road conditions to the Council's Press Officer, local media or general public as and when required.
l	Monitoring all aspects of the Highway Winter Service.
m	Maintaining full and comprehensive records of all Highway Winter Service activities.

**2.7 The Responsibility of the Winter Service Operations Manager**

Commented [TR4]: May need to update new job title

The Winter Service Operations manager is responsible for the day to day operation of the Winter Service. This includes:

a	Directing all salting and snow clearing resources at his disposal.
b	Obtaining weather forecasts and ice prediction and monitoring information.
c	Liaising when necessary with the Road Weather Forecaster.
d	Monitoring the 'ice prediction' forecasts and weather conditions.
e	Monitoring actual road surface temperatures and road conditions.
f	Assessing the requirement to carry out precautionary or post salting treatment or snow clearance on the defined network, deciding appropriate start times, rates of spread of salt, arranging for the work to be carried out, monitoring treatments and amending instructions, when necessary, due to a change of road or weather conditions.
g	Assessing the need to carry out post salting or snow clearance to footways and cycle routes and liaising with the City Streetscene Manager and Area Teams to ensure the works are carried out when necessary.
h	Assessing the need to carry out post salting or snow clearance of estate and remaining roads during prolonged spells of sub-zero temperatures, and liaising with the City Streetscene Manager and Area Teams to ensure the works are carried out when necessary.
i	During prolonged spells of wintry conditions to liaise with the Head of Service, Highway Operations, Structures, Safety and Emergency Planning to prioritise planned and reactive treatments.
j	When moderate to heavy snow is forecast to contact and particularly in the event of deteriorating conditions, notably major blockages to the primary route network and / or severe drifting snow to contact: <ul style="list-style-type: none"> <li>i) Assistant Director Streetscene Manager (Andy Burton)</li> <li>ii) Assistant Head of Service and Traffic Manager ( Neil Smart)</li> <li>iii) Head of Service, Highway Operations, Structures, Safety and Emergency Planning</li> </ul>



Highway Winter Service

	<p>iv) Fleet and Engineering Section Workshops. v) The Council's Press / Media Officer.</p> <p>Additional Internal Contacts:</p> <p>Doug Sharp Olly Grantham Liz Smith Paul Thomas Nicky Guy Stuart Bringham Darren Clark Mel Yates Shaun Hill Steve Marrow</p> <p>During deteriorating conditions, notably major blockages to the primary route network and or drifting snow to also contact:</p> <p>i) The Emergency Services Control Rooms (Police, Ambulance, Fire). ii) The Council's Emergency Planning Officer (out of hours - via Civic Security)</p>
k	Maintaining a list of contractors with suitable plant for snow clearing purposes and hiring in such plant when necessary to do so.
l	Liaising on operational matters when appropriate with the East Riding of Yorkshire Council and Aone + (for the Trunk Roads), to ensure continuity of treatment across highway boundaries.
m	Liaising when appropriate with the Emergency Services, Public Transport Operators and motoring organizations.
n	Passing on factual information on road conditions to the Council's Press Officer, local media or general public as and when required.
o	Providing accurate and timely information for the Council's public contact points such as the Call Centre (CRM), Customer Service Centres and web manager.
p	Providing the Head of Service, Highway Operations, Structures, Safety and Emergency Planning with up to date information regarding road conditions, salting treatments and snow clearance operations.
q	Providing the Head of Service, Highway Operations, Structures, Safety and Emergency Planning with appropriate information to establish comprehensive records of all Highway Winter Service activities and retaining such records and information as required in accordance with the Quality Plan (Section B).
r	Liaising as necessary with the Head of Service, Highway Operations, Structures, Safety and Emergency Planning to ensure the Service is delivered in the most effective, efficient and economic way.
s	Maintaining the stockpile of salt and take reasonable precautions to minimise damage to structures, vegetation, etc., during storage and loading.
t	Collecting the salting vehicles at the start of the season and returning them at the end.
u	Ensuring that vehicles are returned to and collected from the workshops when scheduled for servicing or repairs, for daily and other maintenance and checks as required by the Fleet Manager, and for notifying the workshops of any vehicle faults and making arrangements for immediate repairs.

#### Highway Winter Service

v	Arranging for a fitter to be available during the winter season on 24 hour call out basis to deal with any serious mechanical breakdown(s).
w	Ensuring all operatives receive adequate and appropriate training in Winter Service activities and that drivers are issued with 'route cards' to record details of the treatment, times, etc.
x	Arranging for weather forecasts, ice prediction reports and road and weather monitoring information to be available throughout the winter period.
y	Arranging for the specialist vehicles and specialist winter service equipment to be available throughout the winter period.
z	Ensuring calibration of salt spreading equipment is carried out by the Fleet Manager and supplying copies of the certificates to the Head of Service, Highway Operations, Structures, Safety and Emergency Planning.
aa	Arranging for supplies of salt to be available at the start of the winter season.
ab	Monitoring the salt usage and ensuring supplies are replenished to maintain an appropriate level salt in the stockpile.

### **3.1 Partnerships or Shared Risk and Responsibilities**

Hull City Council has a partnership arrangement with North Lincolnshire and North East Lincolnshire whereby we enter into joint agreements / contracts for supply of Road Weather Forecasts and Road Weather data and Ice Prediction.

Regular meetings with the Humber Winter Maintenance Group also allows useful exchange of information on other aspects of the Winter Service.

### **4.1 Basis of Decision Making Charts**

The "decision making charts" takes account that:

- a) The highway network is relatively compact and does not have any high ground. As the whole of the city is almost at sea level there is only one climatic domain.
- b) The Department does not operate a 24 hour "Winter Control Room", the Duty Supervisor being on "Standby" to monitor conditions and arrange treatments as necessary.
- c) The Department's 24 hour Civic Security Section assist the Duty Supervisor outside of normal working hours by routinely monitoring road and weather conditions overnight and by carrying out specific monitoring and scouting of the network when requested by the Supervisor. Installation of city wide CCTV improves the ability to monitor road and weather conditions across many parts of the city.
- d) The Civic Security Office is the designated point of contact for all Highway Winter Service operational calls at all times.

### **4.2 Decision Making**

There are three separate areas for "Decision Making". These are:-  
Precautionary Salting & Snow Clearance

#### **4.3 Requirements for Precautionary Salting**

Precautionary salting will normally be carried out under the following circumstances:-

- (a) on roads where a forecast indicates that freezing conditions may occur (Road Surface Temperature forecast to be below 1.0°C);
- (b) on roads where a hoar frost is predicted (this occurs when the road surface temperature is below zero and also at or below the dew point);
- (c) in the absence of forecast information when falling temperatures reach +1°C, providing that account has been taken of the prevailing humidity, residual salinity and cloud cover – advice will be sought from the forecast provider in the event of any doubt about these matters.

The decision on presalting operations utilizes the Decision Making Matrix on Page 15

The salt spreading rate is determined from the Matrix on Page 17

Section C contains the lists of roads designated for presalting. These include the principal roads, selected distributor roads and regular bus service routes.

#### **4.4 Snow Clearing**

Snow clearing operations will be carried out across the network as conditions dictate.

When snow is forecast the “defined precautionary routes” will be salted at Category 3, unless the falls are expected to be only flurries or light in which case the roads will be salted at Category 2. When snow has settled salting will be carried out at Category 4.

For the purpose of this plan, there are three stages for snow clearing:-

- Stage 1** Light falls of undisturbed accumulations of snow reaching a depth less than 25 mm.
- Stage 2** Moderate falls of snow between 25 mm and 100 mm in depth, or light falls associated with drifting.
- Stage 3** Heavy falls of over 100 mm or moderate falls associated with drifting.

Stages 1 and 2 will normally be dealt with by one or repeated applications of salt.

Stage 3 conditions may require use of ploughs in addition to salting. As ploughing is likely to block junctions and side roads, arrangements must be made to remove any resulting accumulations of snow. Arrangements must also be made to remove any obstruction due to snow falling on the highway during the opening of lifting river bridges.

#### Highway Winter Service

Normal priority will be to clear the precautionary routes then the secondary routes and finally the remaining roads.

Under extreme conditions priority will be to clear and treat the strategic roads.

Rail Track must be contacted before ploughing takes place adjacent to or on level crossings Ploughing over level crossings **shall not be carried out** without prior approval of Rail Track.

#### **4.5 Post Salting**

- a) When ice has formed on the carriageway and the road surface temperature is not expected to rise above zero before 08.00 hours the following day additional designated roads will be post salted where practicable.
- b) Section C contains the list of Roads for Post Salting. These include remaining bus routes and industrial access roads not presalted, together with the more important accesses and through roads in residential areas.
- c) The spread rate for Post Salting will be at Category 4 (40g/m<sup>2</sup>).
- d) Remaining roads will be treated by salting at Category 4 once ice has been present for 48 hours and is expected to remain for at least a further 48 hours where practicable.

#### **4.6 Footways and Pedestrian Areas**

Footways and Pedestrian Areas are not specifically presalted. However some of the pedestrianised areas also serve as delivery access and this area may be included in roads for precautionary or secondary salting. These are identified in Section C.

For the purposes of this Plan the footways are split into priority groups - City Centre, and Outer Area, these are then further divided into priorities 1 and 2. all of which are identified in Section C. During periods of prolonged wintry conditions other footways will be treated as and when resources are available

Post Salting of Footways and Pedestrian Areas is to be carried out when snow or ice is present in accordance with the following.

- (a) When surface temperatures are expected to rise above zero by 12.00 hours then streets in the list for City Centre Priority 1 are to be treated at salting Category (a), unless residual salt is expected to be present.

#### Highway Winter Service

- (b) If at 08.00 hours surface temperatures have remained below zero for 24 hours and are not expected to rise above freezing before 12.00 hours then streets listed in City Centre priority 2 are to be treated at salting Category (a) and those in primary walking routes category 1 list retreated if necessary.
- (c) If at 08.00 hours surface temperatures have remained below zero for 24 hours and are expected to remain below for a further 24 hours then in addition to the City Centre routes 1 and 2 the streets on the priority list 1 of the "Outer Areas" are to be treated at salting Category (b).
- (d) If at 08.00 hours surface temperatures have remained below zero for 48 hours, the City Centre routes are to be retreated as necessary. If the temperatures are expected to remain below freezing for a further 24 hours then streets on the priority list 2 for outer areas are to be treated at salting Category (b).
- (e) Once surface temperatures have remained below freezing for 72 hours the City Centre and Outer Area priority routes 1 and 2 are to be re-treated if necessary. If the surface temperatures are expected to remain below freezing for a further 24 hours the remaining footways and pedestrianised areas are to be treated at salting Category (b).

Note: When surface temperatures are forecast to rise above zero by 08.00 hours salting will not be carried out.

#### **4.7 Cycle Routes**

Cycle Routes are not normally presalted. Some cycle lanes may be on carriageways included in the list for precautionary or secondary salting and so will receive treatment as the carriageways are salted.

Post salting of cycle tracks and cycle lanes is to be carried out when snow or ice is present in accordance with the decision making chart for "Cycle Routes".

- (a) When surface temperatures are forecast to rise above zero by 08.00 hours salting will not be carried out.
- (b) When surface temperatures are expected to rise above zero by 11.00 hours then those cycle tracks and cycle lanes in priority list 1 will be treated.
- (c) If at 08.00 hours surface temperatures have been below zero for 24 hours and are expected to remain below zero for a further 24 hours then those on priority list 2 will be treated.
- (d) If at 08.00 hours surface temperatures have remained below zero for 48 hours priorities 1 and 2 will be re-treated as necessary and treat remaining cycle tracks and cycle lanes where practicable.

#### **4.8 Strategic Routes**

#### Highway Winter Service

When extreme conditions, such as blizzards, are encountered resulting in heavy accumulations of snow or when drifting causes widespread disruption to the network then priority is to be given to clearing and treating roads designated as strategic routes.

Strategic routes are main links to neighbouring authorities or providing access to essential locations.

While extreme conditions exist the City Engineer, Traffic & Transport Network / Duty Supervisor must liaise with the adjacent Highway Authorities and also keep the Council's Emergency Planning Officer updated on progress in dealing with the conditions.

The list of boundaries in common is given in Section A paragraph 5.2 and a list of the important locations is given in Section C paragraph 3.7.

#### **4.9 Emergency Planning Officer**

During times of severe winter weather conditions the Department's Emergency Planning Officer must be kept informed of the weather conditions, open road forecasts and to which roads are passable to vehicles. Out of hours contact is via Civic Security Section.

**Commented [TR5]:** Should this be the Authorities EPO

#### **4.10 SMA and Specialist Carriageway Surfacing**

Advice in the code of practice (2005) is that the previous advice to carry out double salting is not required but that these surfaces are not likely to retain residual salt.

The treatment as from winter 2005 will be to only apply one treatment on a full presalting run but establish a "SMA" route to treat just these areas when relying on residual salt for the remainder of the network.

A list of the known areas of SMA / Specialist Surfacing on the presalting network is included in Section C.

#### **4.11 Decision Making Matrix & Charts**

Decision Making Charts are an essential part of the Highway Winter Service Plan that under most road and weather conditions will lead the Duty Supervisor to the appropriate decision on Winter Service action.

Decisions are to be made based on the latest Forecast supplied. Part of the service is the availability 24/7 of a Duty Forecaster who should be consulted whenever necessary. If these are unavailable obtain forecast information from other sources and if in doubt carry out treatment.

Should any conditions be encountered that are not covered by the charts or should the Duty Supervisor have a reason to deviate from the charts then the reason(s) for the decision must be recorded.

Highway Winter Service

Decision making charts are reviewed and updated both annually as a part of the annual Service review and when necessary during the winter season.

Separate “Decision Making Charts” are used for

Presalting and Snow Clearance Matrix Page	Page 15
Footways and Pedestrianised Areas	Page 18
Cycle Routes	Page 19
Salt Spreading Matrix	Page 17

**Decision making Guides**

Decision reference in square brackets e.g. [A1] = No Action.

**Decision Matrix for Carriageway Presalting & Snow Clearing Treatment**

		Predicted Road Conditions		
Road Surface Temperature	Precipitation	Roads will be Wet	Roads will have Wet Patches	Roads will be Dry
Will remain above + 1 C	Not applicable	No Action [A1]		
May Fall below +1 C	No rain No hoar frost No fog	Salt before frost [B1]	Salt before frost (see note 1) [B2]	No action likely Monitor (see note 1) [B3]
Expected to fall below +1 C	No rain No hoar frost No fog	Salt before frost [C1]	Salt before frost (see note 1) [C2]	No action likely Monitor (see note 1) [C3]
	Expected hoar Frost Expected fog		Salt before frost (see note 2)	[C4]
	Expected rain BEFORE freezing	Salt after rain stops (see note 3) [C5]		
	Expected rain DURING freezing	Salt before frost, as required during rain and again after rain stops (see note 4) [C6]		
	Possible rain Possible hoar frost Possible fog	Salt before frost [C7]		Monitor weather conditions [C8]
	Expected Snow to settle	Salt before snow fall (See note 5) [D1]		
	Expected snow to melt and freeze	Salt before snow fall (See note 5) [D2]		

**Residual Salt**

Highway Winter Service

The decision to carry out precautionary salting treatment should be adjusted to take account of residual salt or surface moisture.

Latest advice is that residual salt is not effective on SMA surfaces so a "SMA Route" has been introduced. Where there has not been any precipitation / run off from melting snow or ice since the last treatment then residual salt will usually be effective for a second night. In these circumstances only the designated "SMA" route will require treatment.

If there is a doubt that residual salt is present / likely to be effective then carry out presalting.

Monitor and review decisions, with assistance from Civic Security who can update the data, observe conditions on CCTV and carry out scouting.



## Highway Winter Service

### Notes

(1). Particular attention should be given to the possibility of localized washing off of salt due to run off from adjacent land etc. Such locations should be monitored and may require additional treatment(s).

(2). When a weather warning contains reference to expected hoar frost considerable deposits are likely to occur. Hoar frost usually occurs in the early morning and salt deposited on dry roads may be dispersed before it becomes effective. Ideally treatment should be as the hoar frost is forming but this is not usually practicable and salt may have to be deposited on dry roads. This should be done as close as possible to the expected time of the condition. When hoar frost is forecast at other times operations should be adjusted accordingly.

(3). If, under these conditions rain has not ceased by 03.00 hours, crews should report to the depot and treatment started as rain ceases.

(4). Under these circumstances rain will freeze on contact with running services so full pre-salting is required. This is a most serious condition and should be monitored closely and continuously throughout the danger period.

(5). Where only flurries or light snow is expected and road surface temperatures are reasonably high it may not be necessary to presalt. However there can be a cumulative effect whereby melting snow gradually causes the road surface temperature to drop to or below freezing.

Where roads have been presalting melting of accumulations of snow will wash off the salt and re or continuous treatment will be required.

**Treatment Matrix Guide for Presalting**

Weather Conditions Road Surface Conditions Road Surface Temperature (RST)	Treatment		
	Air Temperature	Salting (g/m <sup>2</sup> ) (wet salt)	Ploughing
Frost or forecast frost RST at or above -2 C [T1]		15	No
Frost or forecast frost RST below -2 C and above -5 C [T2]		20	No
Frost or forecast frost RST below -5 C and above -10 C And dry or damp road conditions [T3]		25	No
Frost or forecast frost RST below -5 C and above -10 C And wet road conditions (existing or anticipated) [T4]		2 x 25	No
Ice formed (minor accumulations) [T5]	Above -5 C	25	No
Ice formed [T6]	At or below -5 C	2 x 25	No
Light snow forecast (less than 10mm) [T7]		25	No
Medium / heavy snow forecast [T8]		2 x 25	No
Snow covering exceeding 100mm [T9]		25 – 40 Successive (see note 6)	Yes
Hard packed snow or ice [T10]	Above -8 C	25 – 40 Successive (see note 6)	No
Hard packed snow or ice [T11]	At or below -8 C	40 & Grit Successive (see note 6)	No

Notes

6. During spells of prolonged snow / ice it may be necessary to implement a continuous treatment regime. Second crews and reserve drivers should be used to ensure all drivers have reasonable rest /sleep breaks. Overnight continuous treatment can be limited to 3 vehicles on the “Main Road Routes”. During Blizzards priority is to be given to the Strategic Routes.

### Highway Winter Service

Highways Winter Service.  
Decision making chart for **PEDESTRIAN AREAS and FOOTWAYS**

This Chart is to be used each day by 16:00 hours for the treatment the following morning, and at other times as required

**NOTES**

1. On sundays treatment should be limited to City Centre shopping areas

2. Re-treat City Centre only where there is not likely to be residual salt.

3. When snow is or expected to be lying at a depth greater than 25mm priority is to treat the City Centre by clearing snow and salting at cat (a).

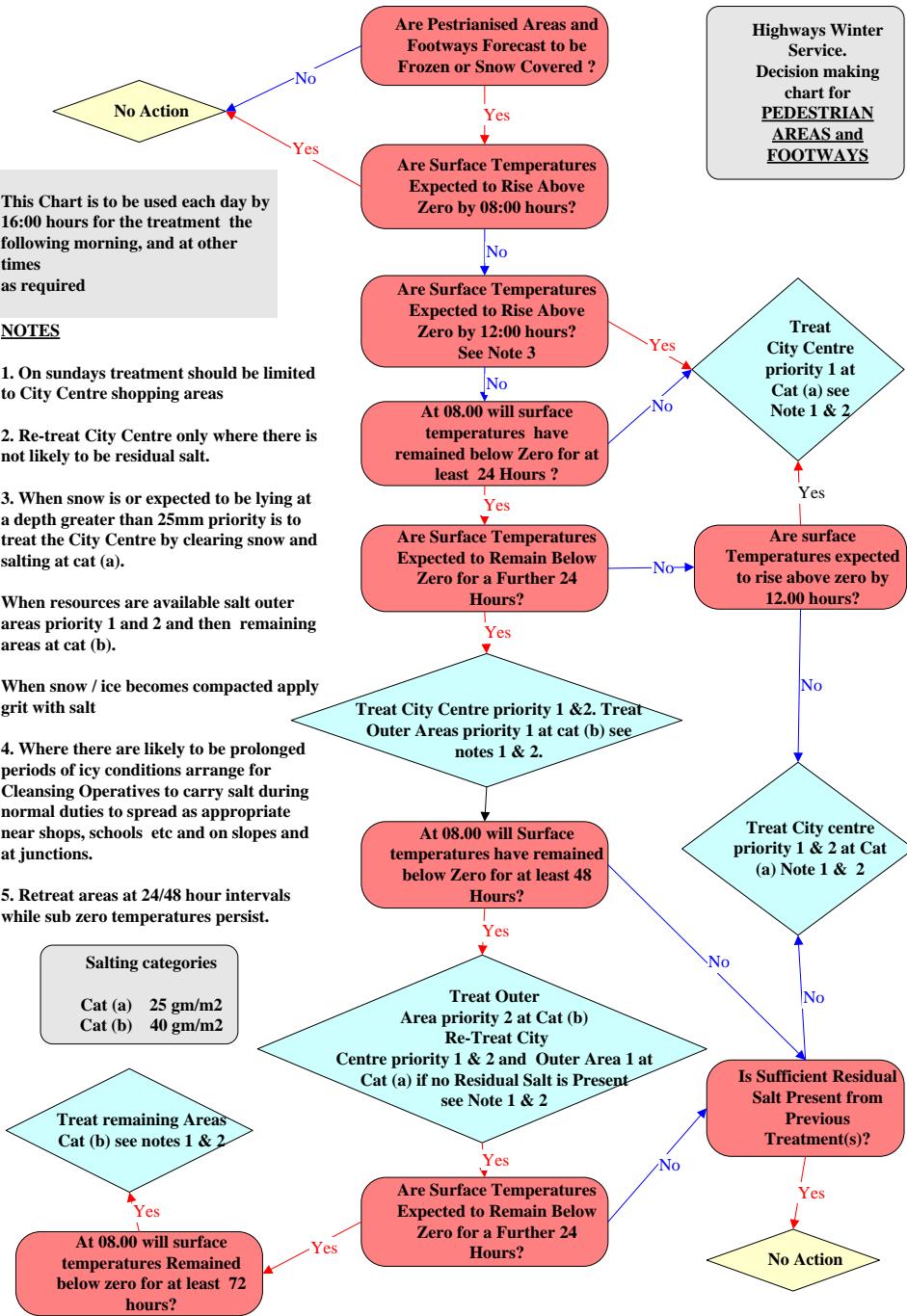
When resources are available salt outer areas priority 1 and 2 and then remaining areas at cat (b).

When snow / ice becomes compacted apply grit with salt

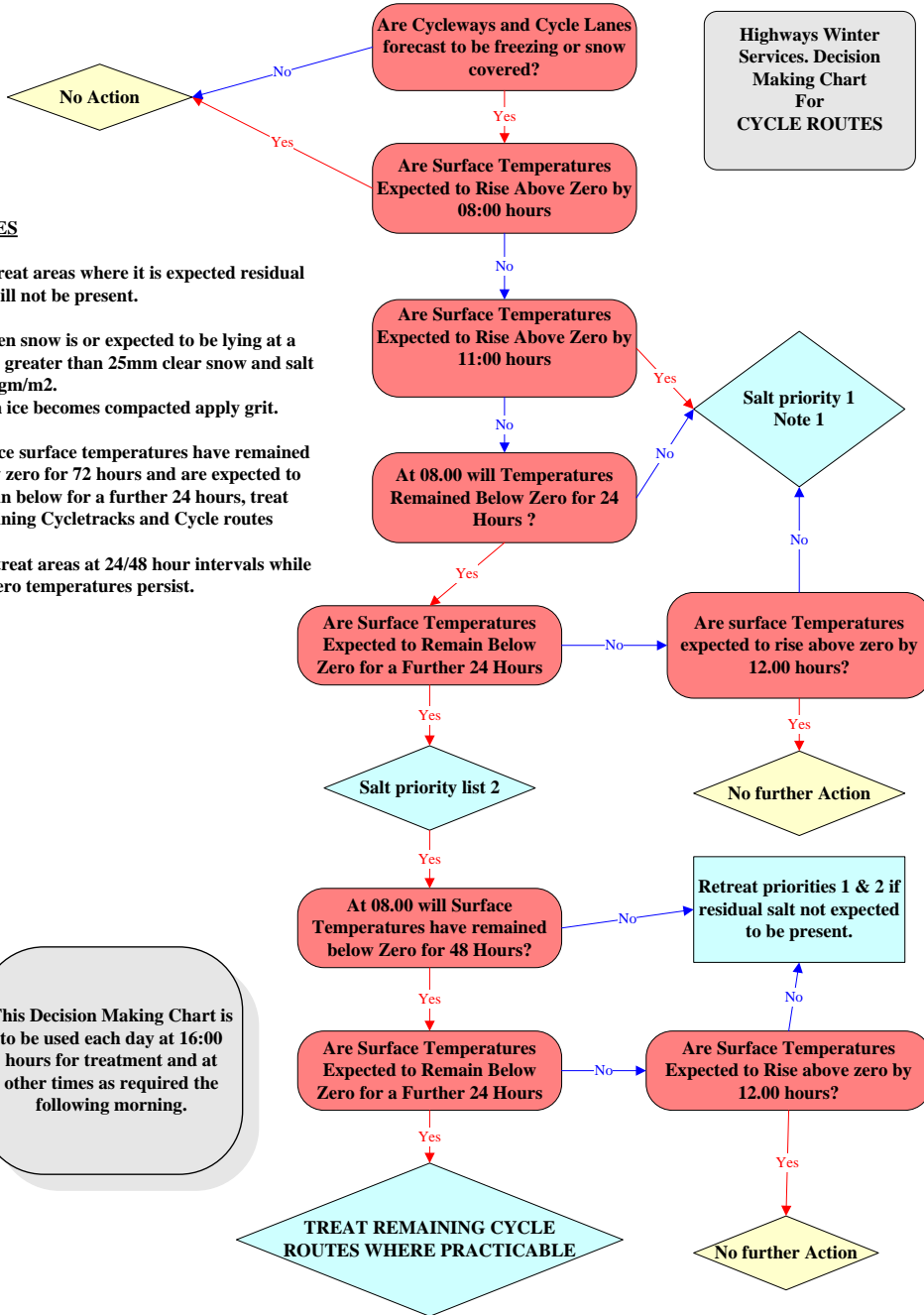
4. Where there are likely to be prolonged periods of icy conditions arrange for Cleansing Operatives to carry salt during normal duties to spread as appropriate near shops, schools etc and on slopes and at junctions.

5. Retreat areas at 24/48 hour intervals while sub zero temperatures persist.

**Salting categories**  
Cat (a) 25 gm/m2  
Cat (b) 40 gm/m2



Highway Winter Service



Highways Winter Services. Decision Making Chart For CYCLE ROUTES

**NOTES**

1. Retreat areas where it is expected residual salt will not be present.
2. When snow is or expected to be lying at a depth greater than 25mm clear snow and salt at 25gm/m<sup>2</sup>. When ice becomes compacted apply grit.
3. Once surface temperatures have remained below zero for 72 hours and are expected to remain below for a further 24 hours, treat remaining Cycletracks and Cycle routes
4. Retreat areas at 24/48 hour intervals while sub zero temperatures persist.

This Decision Making Chart is to be used each day at 16:00 hours for treatment and at other times as required the following morning.

**Section A Part 5 Liaison Arrangements with other Authorities**

**5.1 Liaison Arrangements with other authorities**

The contact numbers for adjacent authorities are

- (a) East Riding of Yorkshire Council (E R Y C)

Highways Enquiry Line tel 0845 600 1666

Commented [TR6]: Check and update

- (b) A one + for the A63 and A1033. (HA)

24 Hour call Centre tel 08457 504030

Commented [TR7]: Check and update

Emails regarding daily decisions are provided to the following interested parties:-

- Doncaster County Council
- East Riding of Yorkshire County Council
- EYMS
- HCS Security
- Highways Agency and their agents
- Hull Connect Call Centre
- Humberside Fire Brigade
- Humberside Police
- KC Stadium
- North Lincolnshire County Council
- North Yorkshire County Council
- Radio Humberside
- Stagecoach
- City Streetscene
- The Deep
- Viking Radio
- York County Council

Commented [TR8]: Review List

The Highways Agency agents update the Highway Operations manager on their daily decisions.

**5.2 List of Carriageway Boundaries in common with Adjacent Highway Authorities**

<u>Road</u>	<u>Adjacent Authority Street Name</u>	<u>Hull Street Name</u>	<u>Treatment By</u>
A63	Clive Sullivan Way	Priory Way	H A
A63	Clive Sullivan Way	Brighton Street	H A
A63	Clive Sullivan Way	Rawling Way	H A
A63	Clive Sullivan Way	Daltry Street	H A
A63	Clive Sullivan Way	Fishermans Walk / Madeley St	H A
A63	Hessle Road	Ferensway	H A

Highway Winter Service

A63	Hessle Road	Waverley Street	H A
A63	Hessle Road	St James Street	H A
A63	Castle Street	Myton Street	H A
A63	Castle Street	Commercial Road	H A
A63	Castle Street	Princes Dock Street	H A
A63	Castle Street	Dagger Lane	H A
A63	Castle Street	Fish Street	H A
A63	Castle Street	Vicar lane	H A
A63	Castle Street	Market Place	H A
A63	Castle Street	Humber Dock Street	H A
A63	Garrison Road	Queen Street	H A
A63	Garrison Road	Great Union Street	H A
A63	Garrison Road	Plimsoll Way	H A
A63	Garrison Road	Mount Pleasant (A1033)	H A
A63	Garrison Road	Hedon Road	H A
A63	Garrison Road	Southbridge Road	H A
A1033	Hedon Road	Alex Dock Access Road	H A
A1033	Hedon Road	Southcoates Lane	H A
A1033	Hedon Road	Northern Gateway	H A
A1033	Hedon Road	Frodsham Street	H A
A1033	Hedon Road	Marfleet Avenue	H A
A1033	Hedon Road	Marfleet Lane	H A
A1033	Hedon Road	Valetta Street	H A
A1033	Hedon Road	Somerden Road	H A
	Priory Way	Livingston Road	E Y R C
	Saxon Way	Saxon Way	E R Y C
	Sainsbury Way	Sainsbury Way	E R Y C
	Hull Road	Hessle Road	E R Y C / HCC
	Bethune Avenue	Bethune Avenue	E R Y C / HCC
	Mollison Road	Mollison Road	E R Y C
	Berryman Way	Lymington Garth	E Y R C
A1105	Boothferry Road	Boothferry Road	E R Y C
	St Thomas More Road	St Thomas More Road	E Y R C / HCC
	Rockeby Avenue	Rockeby Avenue	E R Y C
	Rockeby Avenue	Rockeby Park	E R Y C
	Rockeby Park	Rockeby Park	E R Y C
B1231	Hull Road	Anlaby Road	E R Y C / HCC
	Coleville Avenue	Coleville Avenue	E R Y C
	Faversham Avenue	Faversham Avenue	E R Y C
	Norland Avenue	Norland Avenue	E R Y C
	Lincoln Green	Hawkship Gardens	E R Y C
	Kendal Way	Kendal Way	E R Y C
	Springhead Lane	Springhead Avenue	E R Y C / HCC
	Kingston Road	Willerby Road	E R Y C
	Priory Road	Priory Road	E R Y C
	Dent Road	Dent Road	E R Y C / HCC
	Bishop Alcock Road	Bishop Alcock Road	E R Y C
	Boltyby Mews	Boltyby Mews	E R Y C
	Burrill Mews	Burrill Mews	E R Y C
	Lythe Avenue	Lythe Avenue	E R Y C
	Bricknell Avenue	Bricknell Avenue	E R Y C

Highway Winter Service

	Strathcona Avenue	Strathcona Avenue	E R Y C
B1233	Hull Road	Cottingham Road	E R Y C / HCC
	Inglemire Lane	Inglemire lane	E R Y C
	Endike Lane	Endike Lane	E R Y C / HCC
	Danepark Road	Orchard Park Road	E R Y C
	Brudenall Way	Brudenall Way	E R Y C
A1079	Beverly Road	Beverley Road	E R Y C/HCC
A1033	Raich Carter Way	Raich Carter Way	E R Y C / HCC
C17	Wawne Road	Wawne Road	E R Y C / HCC
	Becklington Close	Becklington Close	E R Y C
A165	Ganstead Lane	Ganstead Lane	E R Y C / HCC
B1238	Main Road Bilton	Main Road Bilton	E R Y C / HCC

**5.3 Police**

Cooperation between the Police and Highway Authority is an essential part of the Winter Service and communication must be maintained at all times.

**Section A Part 6 Winter Risk Period**

**6.1 Winter Season**

The winter period can be considered to run from the beginning of October to the end of April following and can be split into three periods defined for operational purposes as:-

High Period	December, January and February	severe conditions might reasonably be expected
Low Period	November and March	severe conditions may occur
Marginal Period	October and April	severe conditions are generally not expected

**6.2 Standby**

Between the second week in October and second week in April the road and weather conditions will be monitored and crews of drivers and loading shovel operators will be on 24/7 standby to report to the depot to commence pre-salting operations.

**Section A Part 7 Reciprocal Agreement with the East Riding of Yorkshire Council**

The treatment of those short sections of highway network boundaries with the East Riding of Yorkshire Council have been reviewed so that the most efficient method of treatment can be undertaken, in order to ensure a consistent approach can be maintained and provide the maximum flexibility it has been agreed that each authority will treat its own section of the network and will not treat the other authorities highway network.



## SECTION B

### QUALITY PLAN

<b>Page</b>	<b>Part</b>	<b>Title</b>
25	Part 1	Quality management regime
25	Part 2	Document control procedures
25	Part 3	Circulation of documents
26	Part 4	Information recording and analysis
27	Part 5	Arrangements for performance monitoring, audit and updating

**Section B Part 1 Quality Management Regime**

- 1.1 The Head of Service, Highway Operations, Structures, Safety and Emergency Planning is responsible for the Highway Winter Service and this includes Quality Control Procedures.
- 1.2 The Head of Service, Highway Operations, Structures, Safety and Emergency Planning will produce a check list of relevant Highway Winter Service actions to be included in the "Highway Winter Service Operational Manual".

**Section B Part 2 Document Control Procedures**

- 2.1 The important documents include
  - The Highway Winter Service Plan
  - The Highway Winter Service Operational Manual
- 2.2 These documents will be distributed to those on the distribution list.

**Section B Part 3 Circulation of Documents**

**3.1 The Highway Winter Service Operational Manual will be distributed to**

To

The Assistant Director Streetscene  
Head of Streetscene Cleansing, Grounds & Open Spaces.  
Head of Waste Management  
City Engineer, Head of Service Network Management  
Head of Service, Business Improvement & Transport  
The Security Controller (Martin Walker)

**3.2 The Highway Winter Service Plan will be made available on the Council's web page**

**Section B Part 4 Information recording and analysis**

- 4.1 It is important to record the organisation and operation of the Highway Winter Service.
- 4.2 These records are to be available either in the relative offices or with the Head of Service, Highway Operations, Structures, Safety and Emergency Planning for 1 year after the end of the winter then retained in archives for a further 9 years.

4.3 **The Head of Service, Highway Operations, Structures, Safety and Emergency Planning is responsible for the following records.**

Road Weather Forecasts  
Road and Weather Monitoring Data  
Costs of the Service  
Daily Decision Records taken by the Duty Supervisor  
Summary of dates, times and spread rates of pre and post salting treatments  
Summary of dates, times and numbers of people employed on hand salting / reactive treatments  
Vehicle calibration  
Salt testing and usage  
Manuals, Maps, Decision Making Charts, etc., detailing the Service  
Committee Reports and Minutes

4.4 **The Winter Service Operations Manager is responsible for producing the following records**

Day to Day Diary of all communications, updating of forecasts and monitoring data and decisions on Highway Winter Service treatments  
Completed Drivers Route Sheets  
Training records for operational personnel  
Records of duties and time spent by operational personnel on the Highway Winter Service.  
Vehicle availability / breakdowns  
Winter Service Correspondence to or from the Highway Operations Section.

4.5 **As part of performance comparisons the following will be analysed.**

Number of pre salting runs  
Numbers of days when treatment was required to deal with snow both by using the salting vehicles and treatment by hand.

**Section B Part 5 Arrangements for performance monitoring, audit and updating**

- 5.1 The highly variable and unpredictable nature of the British winter means that a simple comparison of budget with out-turn figures is not an appropriate performance indicator.
- 5.2 To be informative and cost effective the performance of Highway Winter Service should be assessed under the following headings:-
- (a) Operations
    - Numbers of turn out for immediate action not meeting response time (1 hour)
    - Numbers of pre salting runs not meeting treatment times (3 hours)
    - Total number of pre-salting runs
    - Salt usage
  - (b) Financial
    - Average cost per pre salting run
  - (c) Vehicles – monthly report summary of breakdowns / unavailability

**SECTION C**

**ROUTE PLANNING FOR  
CARRIAGEWAYS, FOOTWAYS  
AND CYCLEWAYS**

<b>Page</b>	<b>Title</b>
29	General
29	Carriageway routes for precautionary treatment
38	Carriageway routes for post treatment
43	Carriageway routes for snow clearance – Strategic Routes
46	Routes for footbridges, subways and other high risk pedestrian areas
47	Routes for other footway treatment by risk level
55	Cycle routes
56	Response and treatment times

**Section C General**

1.1 The pre and post salting routes will be reviewed annually taking into account roads newly adopted, altered or closed or roads where new development has increased the traffic flows and roads that have been resurfaced with specialist or SMA surfacing.

1.2 Carriageway Treatment

There are 4 operational plans to treat the carriageways depending upon road conditions and the severity of the weather.

These are

- a) Pre-salting
- b) SMA surfaces only
- c) Post salting
- d) Strategic routes

**Section C Carriageway Routes for Precautionary Treatments**

2.1 This treatment is to pre salt designated routes whenever it is likely that ice will form or snow will settle. Pre-salting makes up the major part of the Highway Winter Service. The decision whether or not to pre-salt is taken using the "Decision Making Matrix" in Section A.

2.2 The streets for pre-salting are listed below and make up the more important and well used roads. These include principal roads, main distributors, main industrial areas and the regular bus routes as shown on the published Bus Route Map.

2.3 These streets are divided into 6 separate routes and are treated using a fleet of salting vehicles with each driver allocated 1 route.

Highway Winter Service  
**STREETS FOR PRE SALTING**

The full length of the street is treated unless details are shown in the "From" to "To" columns

Street	From	To	Comments
A63 Slip Road	Fishermans Walk	Hessle Road	
Adelaide Street	Porter Street	Walker Street	
Air Street			
Albert Avenue			
Albion Street			
Alexandra Dock Access	Southbridge Road	Roundabout	
Alfred Gelder Street			
Althorp Road	Runnymede Way	First Roundabout	ASDA Entrance
Amethyst Road	Barham Road	Hopewell Road	
Amsterdam Road			
Anlaby Park Road North			
Anlaby Park Road South			
Anlaby Road	Carr Lane	City Boundary	
Annandale Road			
Anne Street			
Antwerp Road			
Argyle Street			
Ark Royal			
Arnold Lane			
Arnold Street			
Ashcombe Road			
Askew Avenue			
Bainton Grove	Query why on route		
Baker Street			
Bankside			
Barham Road			
Barmston Street			
Barnes Way			
Barnstable Road			
Bellfield Avenue			
Belmont Street			
Bethune Avenue	Anlaby Park Rd Sth	City Boundary	
Beverley Road	Freetown Way	City Boundary	
Biggin Avenue			
Bilsdale Grove			
Bilton Grove	Marfleet Lane	Portobello Street	
Blanket Row			
Bodmin Road			
Bond Street			
Bontoft Avenue			
Boothferry Road			
Boulevard			
Bowling Circle			
Bricknell Avenue			
Bridlington Avenue			

Highway Winter Service

Brighton Street			
Brook Street			
Bude Road			
Burniston Road			
Calvert Lane			
Calvert Road			
Cannon Street			
Carnegie Street			
Caroline Street			
Carr Lane			
Cave Street			
Cavendish Road			
Chamberlain Road			
Chanterlands Ave			
Chapel Street			
Chapman Street			
Chariot Street			
Charles Street	Jarratt Street	John Street	
Charles Street	Freetown Way	Bridlington Avenue	
Charlotte Street	George Street	Dock Office Row	
Cheltenham Avenue			
Church St (Sutton)			
Citadel Way			
Clarence Street			
Cleveland Street			
Clough Road			
College St (Sutton)			
Commercial Road			
Compass Road			
Copenhagen Road			
Cottingham Road	Beverley Road	City Boundary	
County Road North			
County Road South			
Cranbrook Avenue			
Cross Street			
Crowle Street	Emperingham St	Wyke Street	
Cumberland Street			
Cumbrian Way			
Daltry Street			
Dalton Street			
David Lister Drive	Rosemead St	Fire Station	
Derringham Street			
Diadem Grove			
Dock Office Row	Charlotte Street	High Street	
Dock Street			
Dorchester Road			
Drypool Bridge			
Dunvegan Road			
Elgar Road	Sibelius Road	Gerswin Avenue	
Ellerburn Avenue	Endike Lane	Orchard Park Rd	



Highway Winter Service

Ellis Street			
Emperingham Street	Grindell Street	Crowle Street	
Endike Lane	Beverley Road	City Boundary	
English Street			
Ennerdale			
Estcourt Street	Belmont Street	Rosemead Street	
Exeter Grove	Bilsdale Grove	St Johns Grove	
Fairfax Avenue			
Falkland Road			
Ferensway			
Fernhill Road			
Ferry Lane			
Fish Street			
Fishermans Walk			
Foster Street	Stoneferry Road	Bus Depot	
Fountain Road			
Freetown Way			
Ganstead Lane	Holderness Road	City Boundary	
George Street			
Ghandi Way			
Gerswin Avenue			
Gibraltar Road	Raich Carter Way	First Roundabout	
Gillett Street			
Gillshill Road			
Goodhart Road			
Goulton Street			
Gower Road			
Grammar School Road			
Grampian Way			
Grange Road			
Great Union Street			
Green Lane			
Greenwich Avenue			
Greenwood Avenue	Sutton Road	Endike Lane	
Grimston Street			
Grindell Street			
Guildhall Road			
Hall Road			
Haller Street			
Hamburg Road			
Hanley Road	Ledbury Road	Fernhill Road	
Hanover Square			
Hartoft Road			
Havelock Street	Witty Street	Hessle Road	
Hawthorne Avenue			
Hedon Road	Great Union Street	Mount Pleasant	
Hedon Road	Mount Pleasant	Southcoates Ln	
Henry Boot Way	Priory Way	1 <sup>st</sup> Roundabout	Park and Ride
Hessle Road	Rawling Way	City Boundary	
High Street			
Holderness Road			

Highway Winter Service

Holwell Road			
Holmpton Grove	St. Johns Grove	Preston Road	
Honiton Road			
Hotham Road North	Bricknell Ave	Cottingham Road	
Hotham Road South			
Hopewell Road	Maybury Road	Grange Road	
Howdale Road			
Humber Dock Street			
Humber Place			
Humber Street			
Hyde Way	Roundabout	Roundabout	
Ice House Road	Walker Street	Anlaby Road	
Inglemire Lane			
Ings Road			
Jackson Street			
Jameson Street	King Edward Street	George Street	
Jameson Street	Chapel Street	Paragon Square	
Jarratt Street			
James Reckitt Avenue			
John Newton Way			
John Street	Charles Street	Kingston Square	
Kesteven Way			
Kestrel Avenue			
King Edward Street			
Kingsbury Way			
Kingston Square			
Kingston Street	Commercial Road	English Street	
Kirklands Road			
Kingswood Link Road			
Laburnum Avenue			
Lambath Road			
Land of Green Ginger			
Langdale Avenue			
Leads Road			
Ledbury Road			
Liberty Lane			
Lincoln Street			
Linnaeus Street			
Littondale			
Lockwood Street	Cannon Street	Barmston Street	
Lockton Grove	Rosedale Grove	Calvert Road	
Lombard Street	Portland Street	Ferensway	
Londesborough Street	Argyle Street	Park Street	
Lothian Way			
Lowgate			
Lowgate (Sutton)			
Main Street			
Main Road (Bilton)	Holderness Road	City Boundary	
Manor Street			
Manor House Street			
Marfleet Avenue	Hedon Road	Marfleet Lane	

Highway Winter Service

Marfleet Lane	Marfleet Avenue	Holderness Road	
Market Place			
Maybury Road			
Middlesex Road			
Midland Street			
Midmere Avenue			
Mill Street	Cross Street	Ferensway	
Mizzen Road			
Moorhouse Road	Wymersley Road	Hotham Rd South	Bus Link
Morton Street			
Mount Pleasant			
Myton Street			
National Avenue			
Newbridge Road			
New Cleveland Street			
Newland Avenue			
Newstead Street			
Nidderdale			
Noddle Hill Way			
North Bridge			
North Church Side			
North Road			
Northern Gateway	Hedon Road	Dock Entrance	Humber view Car Park
Northumberland Avenue	Lockwood Street	Fountain Road	
Orchard Park Road			
Osborne Street			
Oslo Road			
Oxford Street			
Paragon Street			
Paragon Square			
Park Grove			
Park Street			
Parliament Street			
Pennine Way			
Percy Street			
Perth Street West			
Pickering Road			
Pioneer Way			
Plimsoll Way	Garrison Road	South Bridge Road	
Porter Street	Midland Street	Adelaide Street	
Portland Street	Portland Place	Lombard Street	
Portland Place			
Portobello Street			
Preston Road			
Princes Avenue			
Priory Road			
Priory Way			
Prospect Street			
Quay Street			
Queens Dock Avenue	Alfred Gelder Street	Vernon Street	
Queens Dock Avenue	Grimston Street	Wilberforce Drive	

Highway Winter Service

Queens Road			
Queen Street	Castle Street	Wellington Street	
Queen Victoria Square			
Raven Street			
Rawling Way			
Raich Carter Way	John Newton Way	City Boundary	
Richmond Lane			
Richmond Way			
Robson Way			
Roper Street			
Rosedale Grove	Kirklands Road	Lockton Grove	
Rosemead Street	Estcourt Street	Southcoates Lane	
Rotterdam Road			
Runnymede Avenue			
Runnymede Lane			
Runnymede Way			
Rutherglen Drive	Seafield Avenue	Broadway Drive	
Sainsbury Way			
Saltshouse Road			
Saner Street	Anlaby Road	"Old" Anlaby Road	
Savoy Road			
Saxon Way	Priory Way	First Roundabout	
Scale Lane			
Scarborough Street	West Dock Street	Witty Street	
School Lane			
Scott Street			
Sculcoates Bridge			
Sculcoates Lane			
Seafield Avenue	Willows Avenue	Rutherglen Drive	
Selby Street			
Shannon Road			
Sibelius Road			
Silver Street			
Somerden Road			
Southcoates Avenue			
Southcoates Lane			
South Bridge Road			
South Street	Paragon Street	Carr Lane	
South Church Side			
Spencer Street			
Spring Bank			
Spring Bank West			
Springhead Avenue	Spring Bank West	Maplewood Grove	
Staveley Road			
Stanley Street	Spring Bank	Morton Street	
St. Georges Road			
St. Johns Grove	Exeter Grove	Holmpton Grove	
St Peter Street			
St. Silas Street			
Stockholm Road			
Stoneferry Road			

Highway Winter Service

Story Street			
Strickland Street			
Summergangs Road			
Summergroves Way			
Sutton Road			
Sutton House Road	Ings Road	Gillshill Road	
Swann Street	Wincomlee	Lincoln Street	
The Broadway	Rutherglen Drive	Golden Court	
Thomas Clarkson Way			
Tilbury Road			
Tiverton Road			
Tower Street			
Transport Interchange Road			
Trinity House Lane			
Union Street			
Valletta Street			
Vernon Street			
Victor Street	Ellis Street	Newbridge Road	
Walker Street			
Walliker Street	Carnegie Street	Anlaby Road	
Walton Street			
Waterhouse Lane	Osborne Street	Princes Quay	
Wawne Road	Leads Road	City Boundary	
Wellington Street	Queen Street	Humber Place	
Weighton Grove			
Welton Grove			
Wembley Park Avenue			
West Street	Ferensway	Cross Street	
West Carr Lane			
West Dock Street			
Westbourne Ave			
Westenders Way			
Western Gailes Way			
Westmoreland Street			
Whitefriargate			
Wilberforce Drive			
Willerby Road			
Willows Avenue			
Wiltshire Road			Includes both junctions with Hessle Road
Wincomlee			
Wingfield Road			
Witham			
Witty Street			
Wold Road			
Worship Street			
Wright Street			
Wyke Street			
Wymersley Road			
York Street	Swann Street	Wincomlee	

**3.0 Section C Carriageway Routes for Post Treatment**

- 3.1 This treatment which consists of post salting of designated routes when ice has formed or snow has settled is carried in accordance with the Decision Making Charts in Section "A" when sub zero conditions are expected to last for more than 24 hours.
- 3.2 The streets designated for post salting are included below and are the remaining industrial estates, remaining bus routes, school bus routes and minor distributor roads. The roads are split into 2 routes, divided to treat those to the east and west of the River Hull.

**3.3 Streets for Post Salting**

Street	From	To	Comments
5 <sup>TH</sup> AVENUE			
6 <sup>TH</sup> AVENUE	Ellerburn Avenue	8 <sup>th</sup> Avenue	
8 <sup>TH</sup> AVENUE	6 <sup>th</sup> Avenue	12 <sup>th</sup> Avenue	
8 <sup>TH</sup> AVENUE	18 <sup>th</sup> Avenue	Orchard Park Road	
10 <sup>TH</sup> AVENUE	8 <sup>th</sup> Avenue	16 <sup>th</sup> Avenue	
15 <sup>TH</sup> AVENUE			
16 <sup>TH</sup> AVENUE	10 <sup>th</sup> Avenue	8 <sup>th</sup> Avenue	
21 <sup>ST</sup> AVENUE			
AINTHORPE GR	Willerby Road	Helmsley Grove	
ALLIANCE AVENUE			
AMETHYST ROAD	Barham Road	Staveley Road	
APPLETON ROAD	Cropton Road	Knapton Road	
ARTHUR STREET			
ASHWELL AVE			
ASTRAL WAY	Foxholme Road	Wawne Road	
AUKLAND AVENUE			
BARNSLEY STREET			
BELGRAVE DRIVE			
BERESFORD AVE			
BEXHILL AVENUE	Annandale	Bradford Avenue	Added 04
BILTON GROVE	Preston road	Portobello Street	
BIRDSALL AVENUE	Coronation Rd North	Coronation Rd Sth	
BISHOP LANE			
BOWLALLY LANE			
BRADFORD AVE			
BRANSBURTON ST			
BRINDLEY STREET			
BROAD OAK			
BROMLEY STREET			
BURBAGE AVENUE			
BURLEIGH STREET	Holderness Road	Courtney Street	
CARDEN AVENUE			
CAREW STREET			
CAROLINE PLACE			

Highway Winter Service

CARR STREET			
CENTRAL STREET			
CHAPEL LANE			
CHARLOTTE ST MEWS			
CHOMLEY STREET			
CHURCH STREET			
CLAREMONT AVE	Beresford Ave	Desmond Ave	
CLYDE STREET			
COLONIAL STREET			
CORONA DRIVE			
CORONATION RD NTH			
CORONATION RD STH			
COUNCIL AVENUE			
COURTNEY STREET	Burleigh Street	Mount Pleasant	
COURTPARK ROAD			
CROPTON ROAD	Appleton Road	Hayburn Avenue	
DAGGER LANE			
DAIRYCOATES AVE			
DALSETTER RISE	Dunvegan Road	Sinclair Crescent	
DANSOM LANE			
DAVID LISTER DRIVE	Rosemead St	Fire Station	
DE GREY STREET			
DE LA POLE AVENUE			
DESMOND AVENUE			
DIVISION ROAD			
DOWNFIELD AVENUE			
DODSWELL GROVE			Added 04
DOUGLAS ROAD			
EAGLE TERRACE			
EAST CARR ROAD	Gleneagles Park	Dunvegan Road	
EDGAR STREET			
EGGINGTON STREET	John Street	Car Park	
ELLA STREET	Richmond Street	Newland Avenue	
ELM AVENUE			
ELSMERE AVENUE			
EMMOTT ROAD			
ENDYMION STREET	James Reckitt Avenue	Barnsley Street	
ESTCOURT STREET			
EXETER GROVE	St Johns Grove	Preston Road	
EXMOUTH STREET	Raglan Street	Ventnor Street	
FERENS AVENUE			
FOXHOLME ROAD			
FRANCIS STREET	Caroline Street	Turning Head	
FROME ROAD			
GLENEAGLES PARK			
GODDARD AVENUE	Chanterlands Ave	E End Kirkam Dr	
GORDON STREET	Boulevard	Redbourne Street	
GRASBY ROAD	Saxby Road	Bellfield Avenue	
GREEK STREET			
GREY STREET			
GRIFFIN ROAD	Staveley Road	Parthian Road	

Highway Winter Service

HATHERSAGE RD			
HAYBURN AVENUE			
HELSINKI ROAD			
HEMSWELL AVENUE			
HEMSLEY GROVE	Ainthorpe Grove	Woodlands Road	
HIGHFIELD			
HOOD STREET			
HOPEWELL ROAD	Lingdale Avenue	Annandale Road	
HYMERS AVENUE	Springbank West	Sunny Bank	
INGLEMIRE AVENUE			
JENNING STREET			
JOHN STREET			
KINGSLEY AVENUE			
KIRKHAM DRIVE			
LAMBERT STREET			
LANCASTER DRIVE	Corona Drive	Gillshill Road	
LEE SMITH STREET			
LENNINGRAD RD			
LIME STREET			
LINDENDATE AVE			
LINDENGATE WAY			
LINGDALE ROAD			
LISTER STREET			
LITTLE QUEEN STREET			
LOCKWOOD STREET	Cannon Street	Scott Street	
MALMO ROAD			
MALVERN ROAD	Omerod Road	Omerod Road	
MANOR ROAD			
MAPLE GROVE	Village Road	Elm Avenue	
MARFLEET AVE	South of Bridge	Marfleet Lane	
MARFLEET LANE	Marfleet Avenue	Hedon Road	
MARLBOROUGH AVE			
MELROSE STREET			
MIDWAY GROVE			
MIRFIELD GROVE			
MINEHEAD ROAD			
MITCHAM ROAD			
MORRILL STREET			
NARVIK ROAD			
NEWLAND PARK			
NEW GARDEN STREET			
NITH ROAD			
NORTH STREET			
OMEROD ROAD			
PARTHIAN ROAD	Griffin Road	Amethyst Road	
PEMBERTON ST			
PEARSON AVENUE			
PEARSON PARK			
PIONEER WAY			
PLANE STREET			
POSTERNGATE			



Highway Winter Service

PRINCESS DOCK ST	Castle Street	Posterngate	
PROSPECT STREET	Spencer Street	Pryme Street	
PRYME STREET			
RAGLAN STREET	Newland Avenue	Exmouth Street	
REDBOURNE STREET			
REFORM STREET			
RICHMOND STREET			
ROBINSON ROW			
ROPERY STREET			
ROSMEAD STREET			
RUSTENBURGH ST			
RYDE AVENUE			
RYDE STREET	Beverley Road	Ryde Avenue	
SALISBURY STREET	Park Avenue	Ella Street	
SALMON GROVE	Aukland Avenue	Ferens Avenue	
SAWSTON AVENUE			
SAXBY ROAD			
SEFTON STREET			
SETTING ROAD			
SHERWOOD AVE			
SINCLAIR CRESENT			
SILVESTER STREET			
SOUTH STREET	Jameson Street	Paragon Street	
SNOWDEN WAY			
SPYVEE STREET			
ST JAMES SQUARE			
ST JAMES STREET			
ST JOHNS GROVE	Southcoates Lane	Exeter Grove	
ST MARKS STREET			
STANBURY ROAD			
STATION DRIVE			
STALYBRIDGE AVE			
STEPNEY LANE	Station Drive	Exchange Street	
STOCKSWELL GROVE			
STONEBRIDGE AVE			
STRAWBERRY ST			
SUNNY BANK	Hymers Avenue	Bransburton St	
SWANSFIELD GROVE			
TAYLOR AVENUE			
TEDWORTH ROAD	Loop Staveley Road	Staveley Road	
TELFORD STREET			
THOMAS STREET			
THORSEY STREET			
TILWORTH ROAD			
TREVOR STREET			
TWEED GROVE	Shannon Road	Waveney Road	
TWEENDYKES RD			
VENTNOR STREET	Exmouth Street	Newland Avenue	
VICAR LANE			
VICTORIA AVENUE	Richmond Street	Princes Avenue	
VILLAGE ROAD			

Highway Winter Service

WALCOTT STREET			
WALLIKER STREET	Arthur Street	Anlaby Road	
WANSBECK ROAD			
WASHINGTON STREET			
WASSAND STREET			
WATERLOO STREET			
WAVENEY ROAD			
WELLAND ROAD			
WELLINGTON ST WEST			
WESTBOURNE AVE			
WELWYN PARK AVE			
WELWYN PARK DRIVE	Welwyn Park Ave	Welwyn Park Road	
WELWYN PARK ROAD			
WHARNCLIFFE STREET			
WHELDANE			
WHITWORTH STREET	Kingsley Avenue	Southcoates Ave	
WILLIAMSON ST			
WILTON STREET			
W IVERN ROAD			
WOODLANDS ROAD			
WORTHING STREET			

**Section C Carriageway Routes for Snow Clearance - Strategic Routes**

**4.1 Definition of Strategic Routes**

This is the plan for treatment of carriageways during very severe weather such as heavy snow and blizzards when resources have to be targeted to keeping open road links to neighboring highway authorities (East Riding, the A63 and A1033 Trunk Road Network) and to essential and emergency services and important facilities.

**4.2 List of Important Facilities**

Facility	Name	Where
Police	Station	Osborne Street
Depot	Electric	Clough Road
Depot	EYMS	Anlaby Road
Depot	Stagecoach	Foster Street
Docks	ABP/Ferries	Northern Gateway
Fire	H / Q	Summergroves Way
Fire	Station	David Lister Drive
Fire	Station	Noddle Hill Way
Fire	Station	Calvert Lane
Fire	Station	Clough Road

Highway Winter Service

Hospital	Hull Royal Infirmary	Anlaby Road
Police	Station	Osborne Street
Police	Station	Clough Road
Police	Station	Pearson Park
Police	Station	Courtland Road
Police	Station	Hedon Road
Police	Station	Pickering Road
Police	Station	Barnstable Road
Police	Station	Hessle Road
Police	Station	Priory Road
Rail / Bus	Transport Inter-change	Ferensway

**4.3 Strategic Routes**

Street	From	To
ANLABY ROAD	Ferensway	Boundary
ASKEW AVENUE	Hessle Road	Boothferry Road
BARNSTABLE ROAD	Wawne Road	Holwell Road
BEVERLEY ROAD	Ferensway	Dunswell Roundabout
BOOTHFERRY ROAD	Anlaby Road	Boundary
BRIGHTON STREET	Clive Sullivan Way	Hessle Road ( Flyover )
BUDE ROAD	John Newton Way	Wawne Road
CALVERT LANE	Anlaby Road	Spring Bank West
CALVERT ROAD	Spring Bank West	Priory Road
CAVENDISH ROAD	Sutton Road	Ings Road
CLARENCE STREET	Holderness Road	Drypool Bridge
CLEVELAND STREET	Stoneferry Road	New Cleveland Street
CLOUGH ROAD	Ferry Lane	Beverley Road
COPENHAGEN ROAD	West Carr Lane	Stockholm Road
COTTINGHAM ROAD	Beverley Road	Boundary
COUNTY ROAD NORTH	National Avenue	Priory Road
ENNERDALE	Thomas Clarkson Way	Sutton Road
FAIRFAX AVENUE	Cottingham Road	Bricknell Avenue
FERENSWAY	Freetown Way	Castle Street
FERRY LANE	Stoneferry Road	Clough Road
FREETOWN WAY	George Street	Ferensway
GANSTEAD LANE	Holderness Road	Boundary
GEORGE STREET	North Bridge	Grimston Street
GREAT UNION STREET	Garrison Road	Witham
GREENWOOD	Beverley Road	Endike Lane

Highway Winter Service

AVENUE		
GRIMSTON STREET	Jarratt Street	George Street
HALL ROAD	Endike Lane	Cottingham Road
HESSLE ROAD	Brighton Street	Boundary
HOLDERNESS ROAD	Witham	Ganstead Lane
HOLWELL ROAD	Leads Road	Sutton Road
HOLWELL ROAD	Sutton Road	Wawne Road
INGS ROAD	Cavendish Road	Holderness Road
JOHN NEWTON WAY	Bude Road	Raich Carter Way
LEADS ROAD	Stoneferry Road	Wawne Road
MAIN ROAD BILTON	Holderness Road	Boundary
MARFLEET AVENUE	Marfleet Lane	Hedon Road
MARFLEET LANE	Maybury Road	Marfleet Avenue
MAYBURY ROAD	Holderness Road	Marfleet lane
MOUNT PLEASANT	Garrison Road	Stoneferry Road
NATIONAL AVENUE	County Road North	Bricknell Avenue
NEW CLEVELAND STREET	Witham	Cleveland Street
NODDLE HILL WAY	Wawne Road	Fire Station
NORTH BRIDGE	Witham	George Street
NORTHERN GATEWAY	Hedon Road	Both Dock Entrances
OSBORNE STREET	Ferensway	Ambulance Station
PRIORY ROAD	Calvert Road	Police Station
PRIORY WAY	Clive Sullivan Way	Hessle Road
RAICH CARTER WAY	John Newton Way	Gibraltar Road
RAWLING WAY	Clive Sullivan Way	Anlaby Road
ROBSON WAY	Leads Road	Saltshouse Road
SALTSHOUSE ROAD	Robson Way	Holderness Road
SOUTHCOATES LANE	Hedon Road	Holderness Road
SPRING BANK	Ferensway	Spring Bank West
SPRING BANK WEST	Spring Bank	Willerby Road
STOCKHOLM ROAD	Copenhagen Road	Sutton Road
STONEFERRY ROAD	Cleveland Street	Leads Road
SUMMERGROVES WAY	Hessle Road	Fire Brigade H Q
SUTTON ROAD	Beverley Road	Ennerdale
SUTTON ROAD	Holwell Road	Cavendish Road
SUTTON ROAD	Holwell Road	Ennerdale
THOMAS CLARKSON WAY	Ennerdale	John Newton Way
WAWNE ROAD	Holwell Road	Boundary
WAWNE ROAD	Leads Road	Holwell Road

Highway Winter Service

WEST CARR LANE	Stoneferry Road	Copenhagen Road
WILBERFORCE DRIVE	George Street	Police HQ (Vehicle Exit)
WILLERBY ROAD	Spring Bank West	Boundary
WITHAM	North Bridge	Holderness Road
WORSHIP STREET	Freetown way	Jarratt Street

**Section C Routes for Footbridges, subways and other High Risk Pedestrian Areas**

5.1 Footways and Pedestrianised Areas will be treated in accordance with the “Decision Making Process” detailed in Section A.

<b>Pedestrian Only Footbridges</b>			
<b>Facility</b>	<b>From</b>	<b>To</b>	<b>Comments</b>
CHALK LANE BRIDGE	Hessle Road	Woburn Street	Over Rail Line
BOOTHFERRY ROAD	Anlaby Park Rd Nth	Anlaby Park Rd Sth	Over A1105
MILLENIUM SWING BRIDGE	Nelson Street	Tower Road (The Deep)	Over River Hull
PRIORY DRIVE	Priory Drive	Appleton Road	Over Rail Line
SELBY STREET	Walliker Street	Selby Street	Over Rail Line
WILMINGTON SWING BRIDGE			Over River Hull
WOODGATE LANE	Woodgate Lane	Perth Street	Over Rail Line
<b>Steps</b>			
ANLABY ROAD FLYOVER			
ARGYLE STREET	Anlaby Road	Londesborough Street	
COUNTY ROAD NORTH FLYOVER			
HESSLE ROAD FLYOVER			
MARFLEET LANE FLYOVER			
SOUTHCOATES LANE	Haller Street	Rosmead Street	Over Rail Line
SUTTON ROAD	Sutton Road	Woodleigh Drive	
SUTTON ROAD FLYOVER			
<b>Underpasses</b>			
HOLWELL RD	Rotterdam Road	Copenhagen Road	
UNDERPASS	Midmere Avenue	Newlyn Close	
UNDERPASS	Robson Way		
UNDERPASS	Wawne Road	Cleeve School	
UNDERPASS	Bude Road	Kingscott Close	
UNDERPASS	Holwell Road	Rotterdam Road	

Highway Winter Service

UNDERPASS	Middlesex Road		
UNDERPASS	Savoy Road	Apollo Walk	
UNDERPASS	Savoy Road	Bellfield	
UNDERPASS	Shoreditch	Ings Centre	
UNDERPASS	Suburbiton	Garrick Close	
UNDERPASS	Wawne Road	Haydock	
WALKER STREET	Anlaby Road	Adelaide Street	East Side
WILLERBY ROAD	Manor Road		By Shops
WOLD ROAD	Hotham Road		By Shops

**Section C Routes for other Footway Treatment by Risk Level**

The priorities referred to are listed below.

6.1 City Centre (Prestige Walking Routes)

**City Centre (Priority 1)**

Street	From	To	Comments
Albion Street			
Albion Street Car Park			
Alfred Gelder Street			
Anlaby Road	Carr Lane	Ferensway	
Baker Street			
Bond Street			
Brook Street			
Carr Lane			
Charriot Street			
Charles Street	Freetown Way	Jarratt Street	
Charles Street Car Park			
Drypool Bridge			
Ferensway			
George Street	Bond Street	Freetown Way	
Grimston Street			
Guildhall Road			
Hanover Square Car Park			
High Street			
Jameson Street			
Jarratt Street			
King Edward Street			
Kingston Square			
Land of Green Ginger			
Lowgate	Wilberforce Drive	Chapel Lane	
Manor Street			
Market Place			
Monument Bridge			
Nelson Street			
New Cross Street			

Highway Winter Service

North Bridge			
North Street			
Osborne Street	Ferenswat	Waterhouse Lane	
Paragon Street			
Paragon Square			
Parliament Street			
Percy Street			
Posterngate			
Princes Dock Street			
Prospect Street			
Pryme Street			
Quay Street			
Queens Dock Avenue	Full Length Including inner circle of fountain		
Queen Victoria Sq			
Saville Street			
Scale Lane			
Scale Lane Bridge			
South Street			
Storey Street			
Trinity House Lane			
Trinity Square			
Vernon Street			
Wilberforce Drive			
Whitefriargate			
Worship Street			

**City Centre (Priority 2)**

Street	From	To	Comments
Anne Street	Osborne St		
Bowlalley Lane			
Carroll Place			
Fish Street			
George Street	Freetown Way	North Bridge	
Holy Trinity Church			
John Street			
King Street			
Liberty Lane			
Little Mason Street	Carrol Place	Bourne-Street	
Myton Street			
Osborne Street	Ferensway	Waterhouse Lane	North Side
Prince Street			
Silver Street			
Silvester Street			
Waterhouse Lane	Castle Street	Myton Street	
Bishop Lane			
Ghandi Way			

Highway Winter Service

**Outer Areas (Priority 1)**

Street	From	To	Comments
Albert Ave/Lowther St	School Crossing		
Amethyst Rd/Hopewell Rd	School Crossing		
Anlaby Rd/Calvert Lane	Shops		
Anlaby Rd/Anlaby Park Road North	Shops		
Anlaby Rd/Calvert Lane	School Crossing		
Anlaby Rd/Eastfield Rd	School Crossing		
Anlaby Road	Full Length		
Anlaby Rd/Wheeler St	School Crossing		
Appleton Road	111	125	
Arcon Drive	17	79	
Ashton Close	3	47	
Askew Avenue Shops			
Beecroft Court	1	31	
Bessingby Grove	2	61	
Bethune Avenue	Shops		
Beverley Rd/Inglemire La	School Crossing		
Beverley Rd/Sculcoates La	School Crossing		
Beverley Road	Full Length		
Biggin Avenue			
Boothferry Road footbridge			Shop Fronts
Boulevard/Gordon Street	School Crossing		
Bricknell Ave/O/s School	School Crossing		
Burdale Close	6	93	
Burnby Close	2	42	Sheltered Housing
Cavendish Rd/Gillshill Rd	School Crossing		
Cavendish Rd/School Entrance	School Crossing		
Chamberlain Road			Shop Fronts
Chanterlands Ave/Bricknell Ave	School Crossing		
Chanterlands Ave/Loveridge St	School Crossing		
Chanterlands Avenue			Full Street
Charles Brady Court	1	38	Sheltered Housing
Cheltenham Avenue			
Cherry Hinton Court	1	33	Sheltered Housing
Cloughton Grove	1	13	Sheltered Housing
Cottingham Rd/Newland Ave	School Crossing		
Cottingham Road	Beverley Road	University	



Highway Winter Service

Cottingham Road	10	52	Shop Fronts
Cottingham Road	402	412	Shop Fronts
Cottingham Road	434	440	Shop Fronts
County Rd Nth/Langdale Ave	School Crossing		
County Road South shops			Shop Fronts
Dalsetter Rise	13	59	Sheltered Housing
Dunedin House	1	8	Sheltered Housing
Dunvegan Road	Both sides		incline only
Eastella shops			Shop Fronts
Elgin House	1	8	Sheltered Housing
Elmbridge Parade			Shop Fronts
Endike Lane	421	473	Shop Fronts
Endike Lane	110	116	Shop Fronts
Endike Lane/Drain Bridge	School Crossing		
Enfield Court	1	32	Sheltered Housing
Ernest Kirkwood Close	2	38	Sheltered Housing
Forress House	2	8	Sheltered Housing
Gillshill Rd/School Entrance	School Crossing		
Gillshill Road			Shop fronts
Glasgow Street	31	37	Sheltered Housing
Glenaron House	1	8	Sheltered Housing
Goodhart Rd	O/s Health Centre		
Grandale			
Greenwich Avenue Shops			West side
Greenwod Ave/Ada Holmes	School Crossing		
Greenwood Ave/1st Ave	School Crossing		
Greenwood Avenue	93	123	Shop Fronts
Greenwood Avenue	237	259	Shop Fronts
Greenwood Avenue	264	274	Shop Fronts
Hall Rd/Dane Park Rd	School Crossing		
Hall Rd/Orchard Park Rd	School Crossing		
Hall Rd/Welton Ave	School Crossing		
Hartoft Road	33	51	Sheltered Housing
Hawthorn Ave/Ringrose St	School Crossing		
Hessle Road	Full Length		
Highcourt			Shop Fronts
Holderness Rd/Parkhurst Cl	School Crossing		
Holderness Road	Full Length		
Honiton Rd/Minehead Rd	School Crossing		

Highway Winter Service

Hopewell Rd/Amethyst Rd	School Crossing		
Hotham Road South shops			Shop Fronts
Hucknall Garth	2	62	
Hutton Close	2	10	Sheltered Housing
Inglemire Lane	553	571	Shop Fronts
Inglemire Lane	490		Shop Fronts
Inglemire Lane	113	121	Shop Fronts
Inglemire Lane/Oldstead Ave	School Crossing		
Ings Rd/Tweendykes			Shop fronts
Ings Rd/Wembley Park Ave	School Crossing		
James Reckitt Ave/Chamberlain Rd	School Crossing		
James Reckitt Ave/Gillshill Rd	School Crossing		
James Reckitt Ave/Ings Rd	School Crossing		
Kinnaird House	1	8	Sheltered Housing
Kinthorpe	50	95	Sheltered Housing
Laburnum Ave/Holly Grove	School Crossing		
Lanyon Close	1	53	
Laxthorpe	56	99	Sheltered Housing
Littondale/Nidderdale	School Crossing		
Longden Street	1	32	Sheltered Housing
Lothian Way			
Marfleet Lane	Burdale Close	Marfleet Avenue	East side including shop fronts.
Marfleet Lane	Portobello Street		Shops & Junction
Marfleet Lane/St Richards	School Crossing		
Maybury Rd/School Entrance	School Crossing		
Mizzen Road	144	150	Shop Fronts
Mount Pleasant/Ellis Street	School Crossing		
Muswell Court	4	90	Sheltered Housing
National Ave/Public Footpath	School Crossing		
Newbridge Road	Belmont Street	Southcoates	Shop fronts only
Newbrige Rd/Escourt St	School Crossing		
Newland Ave	Full Length		
Newland Ave/Goddard	School Crossing		

Highway Winter Service

Ave			
Newland Ave/Marshall St	School Crossing		
Nidderdale/School Crossing	School Crossing		
North Rd/Anlaby Rd	School Crossing		
North Rd/Pelican	School Crossing		
Northpoint Centre			
Orchard Park Rd	218	232	Shop Fronts
Orchard Park Shopping Centre including Orchard Centre			Shop Fronts
Orion Close	1	4	Sheltered Housing
pay and display at the rear of Brunswick House			car park
Plimsoll Way/Southbridge Road	School Crossing		
Portobello Street			2 x shop fronts
Preston Rd	O/s Health Centre		
Princes Ave	Full Length		
Princes Ave/Thoresby Street	School Crossing		
Priory Rd/School Entrance	School Crossing		
Priory bridge			Shop Fronts
Priory Road shops			Shop Fronts
Queens Road			Full Street
Roebank Arcade			
Romney Gardens	1	9	Sheltered Housing
Sculcoates Bridge			
Sculcoates Lane	20	40	Sheltered Housing
Shannon Rd/Longhill Primary	School Crossing		
Shannon Road Shops	Douglas Road	Cam Grove	South Side
Sibelius shops			Shop Fronts
Sinclair Crescent	1	59	Sheltered Housing
Sirius Close	2	34	Sheltered Housing
Southcoates Ave/Whitworth St	School Crossing		
Southcoates Avenue			Shop Fronts
Southcoates Lane	Westerdale	Newtown entrance	incline only both sides
Southcoates Lane	Holderness Road	Newbridge Road	
Southcoates Lane/Brindley Street	School Crossing		
Southcoates Lane/School Entrance	School Crossing		
Southcoates Ln/Preston	School Crossing		

Highway Winter Service

Rd			
Spring Bank West	1004	1076	Sheltered Housing
Spring BankWest/Calvert Lane shops			Shop Fronts
Springbank			
St Helena Gardens	1	10	Sheltered Housing
St. Georges Rd/Arthur Street	School Crossing		
Staveley Rd/Griffin Rd	School Crossing		
Strand Close	Brunswick house side		
Summergangs Rd/Swinburne Street	School Crossing		
Sutton House Road	Ings Road		By Shops
Sutton Road	Leads Road	Lambwath Road	
Sutton Road Bridge			River bridge only
The Quadrant	90	106	Shop Fronts
Thornton Court	4	32	Sheltered Housing
Thornwick Close	1	44	Sheltered Housing
Tunis Street	23	29	Sheltered Housing
Walton Street	67	101	Sheltered Housing
Wawne Rd/Biggin Ave	School Crossing		
Wawne Rd/Greygarth Ave	School Crossing		
Wembley Park Ave/Neasden Close	School Crossing		
Whitelees Court	1	31	Sheltered Housing
Willerby Rd/Ainthorpe Grove	School Crossing		
Willerby Road shops			Shop Fronts
Witham	Full Length		
Wold Rd/Hotham Rd	School Crossing		
Wold Rd/Pelican	School Crossing		
Wold Rd/Scalby Gr	School Crossing		
Wold Rd/School Ent	School Crossing		
Wold Road shops			Shop Fronts
Woodcock Street	46	54	Sheltered Housing
Yatesbury Garth			
Yorkshire Close	4	26	Sheltered Housing

Highway Winter Service

**Outer Areas (Priority 2)**

<b>Street</b>	<b>From</b>	<b>To</b>	<b>Comments</b>
Alexandra Road			South Side Only
Amethyst Road			By Shops
Annandale Road	Stockbridge Road	Stalybridge Avenue	North Side
Bethune Avenue	Yarmouth Street	Gower Road	
Bricknell Avenue	Chanterlands Ave	Hotham Rd North	South Side
Cave Street			
Church Street Sutton	Leads Road	Potterill Lane	
Clough Road	Beverley Road	Minton Street	South Side
Cottingham Road	Beverley Road	Chanterlands Avenue	
Dalsetter Rise			North side
Endike Lane	Oldstead Avenue	25th Avenue	
Fenchurch Street	West Side		Full Street
Goddard Avenue	Newland Avenue	The Woodlands	
Grampian Way	Lothian Way		By Shops
Greenwood Avenue	26th Avenue	22nd Avenue	North Side
Greenwood Avenue	25th Avenue	Opposite 22nd Avenue	South Side
Greenwood Avenue	Opposite 8th Avenue	Bev & Barmston Drain	South Side
Grove House View			Full Street
Hardwick Street	South Side		Full Street
Hartoft Road/Grammar School Road	West Side		Full Street
Hotham Road North/Bricknell Avenue junction			Shop fronts
Hymers Avenue	Spring Bank	Sunnybank	West Side
James Reckitt Avenue	Gillshill Road		By Shops
Lambert Street	South Side		Full Street
Marfleet Lane	Winchester Avenue		By shops north side
Melwood Grove	Beverley Road	Nicholson Street	
Mizzen Road			By Shops
Nicholson Street	Melwood Grove	Tunis Street	
Park Grove			
Sidmouth Street	North Side		Full Street
Southcoates Lane	Preston Road End		by shops
St. Ninians Walk			Full Street
Stepney Lane	Beverley Road	Fenchurch Street	North Side
Thoresby Street	South Side		Full Street

**Section C Post Salting of Cycle Routes**

7.1 Cycle Routes will be treated in accordance with the “Decision Making Process” detailed in Section A. The priorities referred to are listed below.

**7.2 Cycle Routes (or parts) which receive treatment during Carriageway Pre Salting**

On street cycle routes are covered by existing salting routes.

**7.3 Priority for Salting of “Off Road” Cycle Routes**

NOTE – Many off road cycle tracks have barriers or gates to prevent unauthorised access. At the time of preparing this list the access arrangements have not been finalised and so it may not be possible to treat all of the following cycle tracks.

**PRIORITY 1**

<b>Cycle Route</b>	<b>From</b>	<b>To</b>	<b>Comments</b>
Foredyke Stream	Sutton Road	Spyvee Street	
Greenwood Avenue	Bev & Barmston Drain	Sutton Road Foredyke Stream	
Hessle Road	Linneaus Street	Union Street	Trunk Road
Hornsea Rail Track	Kestrel Avenue	Foredyke Stream	
Low level track	Duesbury Street	Foster Street	
Cottingham Branch Line	Anlaby Road	County Road North	
Priory Road	Shropshire Close	City Boundary	

**PRIORITY 2**

<b>Cycle Route</b>	<b>From</b>	<b>To</b>	<b>Comments</b>
Bude Road	Holwell Road	Thomas Clarkson Way	
Holwell Road	Sutton Road	Bude Road	
Sutton Road	Beverley Road		
Thomas Clarkson Way			
Withernsea Track	Estcourt Street	Somerden Road	

## **Section C Response and Treatment Times for Carriageways**

### **8.1 Response Time**

The response time is defined as the time between reaching a decision to commence immediate treatment and the first loaded vehicle leaving the depot.

The response time for all carriageway treatments is one 1 hour

When treatment is planned to commence later than one hour from the time of the decision the response time can be extended so that vehicles leave the depot at the designated time.

### **8.2 Treatment Time**

Treatment time is defined as the time from the first vehicle leaving the depot to the completed treatment of the whole of the defined network.

The treatment time for pre-sating is three hours

It is recognised that treatment time may vary with different weather conditions so for other treatments there is no set treatment time as this will vary with condition.

## **Section C Response and Treatment Times for Footways and Cycle Routes**

- 9.1 The response time for immediate treatment of Footways and Cycle Routes is 1 hour.
- 9.2 As this work is post salting, snow clearance or reactive there is no set treatment times.

## **Section C Allocation of Plant, Vehicles, Equipment and Materials to Routes**

- 10.1 The plant, vehicles, equipment and materials will be located at the Stockholm Road Operational Depot, footway and Cycle track resources will be managed by Streetcare

Commented [TR9]: Is this still correct

## **Section C Locations and Maintenance of Salt Bins and Grit Heaps**

- 11.1 Salt Bins are placed on the highway where they are considered to be of use either by winter service personnel or as "self help" by the public. Salt Bins contain a 50/50 mix of grit and rock salt.
- 11.2 Requests by the public for the provision of a salt bin can be made by telephone to the Council's Call Centre (Tel. 300300)
- 11.3 Requests will be assessed to ensure the suitability of the location which includes

Highway Winter Service

- a) The land is highway or Council owned
- b) Suitable access for delivery and replenishing the salt
- c) Not likely to lead to significant nuisance to nearby residents
- d) There is someone willing to spread the salt
- e) No other grit bin exists within 100m of the proposed location

11.4 Other than the main stock at Stockholm Road there are no salt or grit heaps within Hull due to the urban nature of the network and the need to avoid damage to the environment.



**SECTION D**

**WEATHER PREDICTION**

**AND**

**INFORMATION**

<b>Page</b>	<b>Part</b>	<b>Title</b>
59	Part 1	Forecasting, inspections and other decision support information
62	Part 2	Information to be provided page
63	Part 3	Timing and circulation of information page
63	Part 4	Reporting procedures page
63	Part 5	Maintenance of ice detection equipment page

**Section D Part 1 Decision Support Information -Forecasting, Monitoring and Inspections**

**1.1 General**

- a) The support information for use in “Decision Making” will usually be a combination of the Road Weather Forecast, Road and Weather Monitoring Data and Scouting / Inspection of the network.
- b) The road weather forecasts and monitoring data are delivered via the Vaisala “Icecast” system
- c) Should this system fail the weather forecaster will try to fax / email the forecasts to the Council’s Civic Security Section.
- d) Should this not be possible the Duty Supervisor should try to contact the both Vaisala Helpline. Contact numbers are listed in the “Highway Winter Service Operational Manual”.
- e) If no forecasts are available the Duty Supervisor must seek the best information possible using one of a combination of the internet, local or national television forecasts, local or national radio forecasts, teletex. It should be remembered that these forecasts are not updated as regularly as “Open Road” and they usually relate to air temperatures. However particular notice should be made to references concerning “untreated roads likely to freeze / become icy”.

**1.2 Road Weather Forecasts**

- a) Forecasts will be supplied by the Meteo Group.
- b) The forecasts that will be available each day, including at weekends and bank holidays, comprise an early morning forecast, main forecast in the afternoon and an evening update.

**1.3 Specification of Forecasts**

**a) Morning Summary – available from around 07.00 hours**

This forecast includes details of the actual overnight conditions and an outline forecast for the next 24 hours.

**b) Main Afternoon Forecast – available from around 13.00 hours**

This forecast contains a 24 hour text forecast giving

- i) details and confidence of hazards from Ice, Hoar Frost, Snow, Fog, Strong Wind and Rain.
- ii) wind speed and direction, road state, and snow height and accumulations.

Highway Winter Service

iii) summary for “today”, “tonight” and “tomorrow”.

and also a 2-5 day forecast of expected hazards of Ice, Hoar Frost, Snow, Fog, Strong Wind and Rain with comments on the outlook.

**c) Evening Update – available from around 18.00 hours**

Details of significant changes to the afternoon forecast

The Weather Centre carries out 24 hour monitoring of conditions and if these vary significantly they will contact the Council to advise of the change and when appropriate will issue an updated forecast.

**1.4 Forecast Statistics and Analysis**

The weather forecaster will provide regular statistical analysis on the accuracy of their forecasts throughout the season and produce a “severity index” at the end of the winter.

**1.5 Ice Prediction System**

a) During the winter period Vaisala will supply the Council with road and weather monitoring data from equipment in “outstations” located throughout the surrounding region.

b) The computerised system will also deliver the road weather forecast and produce ice warnings and alerts.

**c) Forecasts**

In addition to the text forecasts issued by the Meteogroup the system provides graphs of predicted road surface, air and dew point temperatures against time. As the day progresses the actual values are plotted.

**1.6 Decision Making Process and Responsibilities**

**Routine Decision Making**

The day to day routine operational decisions will be made by the Duty Supervisor using the weather forecasts, the road and weather monitoring data and the “Decision Making Charts” in Section A Part 3.

a) By around 16.30 every day throughout the winter period the Duty Supervisor will reach an “initial decision” on action for the next 24 hours from one of the five following options

1. Pre-salting to commence immediately
  2. Pre-salting to commence at a specified time (e.g. 19.00 hours)
  3. Treatment is likely - but start time cannot yet be determined (e.g. rain falling
- or

#### Highway Winter Service

forecast prior to sub zero temperatures)

4. Treatment is possible – conditions being monitored (marginal night)
5. No Action Planned (minimum forecast temperature well above zero)

- b) If treatment is planned the decision record will include the required salt spread rate (see Section G).
- c) If the decision record includes post salting and / or snow clearance this will be noted on the decision record and the additional record sheets completed.
- d) This decision will be conveyed to the Council's Call Centre and Head of Service, Highway Operations, Structures, Safety and Emergency Planning and also distributed to others as appropriate.
- e) If the decision is for option 3, 4, or 5 and treatment becomes necessary, an update decision form will be completed and distributed from the Dalton Street Depot upon commencement of treatment.
- f) If the decision is for option 1 or 2 and conditions improve so that salting is cancelled, an update form will be completed and distributed as soon as is practicable.

#### Monitoring Data

The data available from the outstations, which can be presented in both graph and table format, include:-

- road surface and depth temperatures;
- air temperature;
- wind speed and direction;
- relative humidity;
- precipitation;
- surface state.

#### 1.7 Outstations

a) Hull does not own any outstations, nor are any sited within the city. Hull uses the outstations at Long Riston on the A165, [owned by the East Riding of Yorkshire Council], and North Ferriby on the A63, [owned by the Highways Agency] as the forecasting sites and monitoring stations for the City's highway network.

Commented [TR10]: Add out two locations

b) The City Council has access to data from 20 outstations across the region covering an area from Bempton in the North East to Ludborough in the South East to Cadwell in the South West and York in the North West. In times of rapidly changing or difficult situations the monitoring readings from the outlying stations may help give advance warning of the wintry conditions heading towards Hull.

## Highway Winter Service

The Full list of monitoring stations available to Hull are:-

Road Number	Location
A1036	North East (York)
A1237	South West (York)
A15	Elsham Wold
A153	Cadwell
A16	Ludborough
A163	Shiptonthorpe
A165	Long Riston
A166	Great Houndales
A166	Garroby
A18	Old Vicarage
A180	Stallingborough
A19	Riccall
A57	Newton
A63	North Ferriby
A631	Caenby
A64	Staxton
B1216	Neap House
C111	Bempton Lane
M18	Hatfield
M62	High Eggborough

### 1.8 Scouting and Inspections

The Department does not operate a 24 hour winter control room but Civic Security Officers are available for monitoring the forecast System and also to carry out overnight / out of hours scouting operations and inspections of the network. The CCTV network across the city also improves the ability of these Officers to monitor road and weather conditions across more of the city.

#### **Section D Part 2 Information to be provided**

The Duty Supervisor is responsible for monitoring the road and weather conditions, for reaching an appropriate decision on treatment of the network and for overseeing the work.

Each day an initial "Daily Decision Record" will be made from one of five options that are

- 1. Pre-salting to commence immediately**
- 2. Pre-salting to commence at a specified time**
- 3. Pre-salting is likely but start time cannot yet be determined**
- 4. Pre-salting is possible – the conditions are being monitored**
- 5. No Action is planned**

Highway Winter Service

Supplementary decision record sheets are to be completed if post salting or snow clearance is planned for the following morning.

Should the option be 1 or 2 and the conditions improve an update record sheet must be issued as soon as is practicable.

Should the option be 3, 4 or 5 and salting becomes necessary then an update record sheet must be issued at the commencement of the treatment.

**Section D Part 3 Timing and circulation of information**

a) The Duty Supervisor should reach the “initial daily operational decision” by around 1300 – 13.30 hours. This “initial daily decision” is to be communicated to

- The duty drivers
- The duty loading shovel operator
- City Engineer, Head of Service Network Management
- Head of Service, Highway Operations, Structures, Safety and Emergency Planning
- Civic Security Section
- Call Centre
- Hull & East Yorkshire Hospital (NHS) Trust
- East Riding of Yorkshire Council Winter Control Room
- A one + (for the Trunk Roads)
- Radio Humberside
- Viking Radio
- K C Stadium
- Met Office

b) Revision to or updating of the initial decision will be done as required and communicated to those on the above list as appropriate.

**Section D Part 4 Reporting procedures**

4.1 Routine operating decisions will be reported as in part 3 above.

**Section D Part 5 Maintenance of ice detection equipment**

5.1 Hull does not own any outstations so is not responsible for any maintenance arrangements.

**Commented [TR11]:** Update to include our stations and contract for maintenance

**SECTION E**

**ORGANISATIONAL ARRANGEMENTS**

**AND**

**PERSONNEL**

<b>Page</b>	<b>Part</b>	<b>Title</b>
65	Part 1	Organisation chart and employee responsibilities
65	Part 2	Employee duty schedules, rotas and standby arrangements
66	Part 3	Schedules of contract and voluntary personnel (CVP)
66	Part 4	Contact and commissioning arrangements for CVP
66	Part 5	Training and Development arrangements
67	Part 6	Health and safety procedures

**Section E Part 1 Organisation chart and employee responsibilities**

**1.1 City Streetscene, Safety, Transport & Network Co-ordination Hub manager**

Head of Service, Highway Operations, Structures, Safety and Emergency Planning is responsible for overall organisation of the Highway Winter Service.

Office hours are 08:00 – 1600 Monday to Thursday and 08:00 – 15:30 Friday

Tel: 01482 614870

**1.2 Operational Services Office**

This Section based at Stockholm Road, is responsible for the day to day operation of the Highway Winter Service.

Tel: 01482 615474 24hr

**1.3 Hull City Services 24 Hour Civic Security Room**

This office is responsible for relaying emergency calls received outside normal working hours to the relevant Duty Officers.

Tel: 01482 616720/1 Fax: 01482 616725.

**Hull City Council Call Centre**

**The Call Centre Number is Hull (01482) 300 300**

**This number is operational 08.00 to 19.00 Mondays to Fridays and 09.00 to 13.00 on Saturdays.**

**It is not known what restrictions will apply over the Christmas and New Year periods but they are operational when the Council Offices are closed.**

**Section E Part 2 Employee duty schedules, rotas and standby arrangements**

- 2.1 The Operations Manager will arrange for Duty Supervisors, Salting Vehicle Drivers and Loading Shovel Operators to be on "Standby" to turn out to commence salting operations at any time, 24 hours a day, throughout the standby period. Rota's of these personnel will be included in the "Highways Winter Service Operations Manual".



#### Highway Winter Service

- 2.2 All personnel involved in the Highway Winter Service shall acquaint themselves of the duties responsibilities and working procedures necessary for them to carry out their tasks in an effective and efficient manner.
- 2.3 Work attendance during Adverse Weather Conditions.

Kingston upon Hull City Council has an agreed Policy and Guidelines (February 1998) for staff who encounter difficulties due to bad weather conditions, principally during heavy snowfall and freezing temperatures, in travelling to and from work. A copy of the Policy and Guidelines is included in the "Winter Service Operations Manual"

To ensure consistency of information and advice across the Authority the City Engineer, Head of Service Network Management will be responsible for providing information on the state of local roads, weather forecasts and make recommendations accordingly.

Each Chief Officer will nominate liaison officers to contact the City Engineer, Head of Service Network Management, if advice is required during adverse weather conditions, and ensure all employees in their departments are informed of the advice. Whenever possible information on adverse weather conditions will be placed on the Council's "intranet" site and through the use of social media.

#### **Section E Part 3 Schedules of contract and voluntary personnel (CVP)**

- 3.1 There are no contract or voluntary personnel involved in the operation of Hull's Highway Winter Service".

#### **Section E Part 4 Contact and commissioning arrangements for CVP**

- 4.1 As there are no "CVP" there are no commissioning arrangements.

#### **Section E Part 5 Training and Development arrangements**

- 5.1 It is recognised that all personnel involved in the Highway Winter Service should receive appropriate training. Records of training should be kept in the "Highway Winter Service Operations Manual".
- 5.2 The Duty Supervisors will receive training in the operation of the Ice prediction System and in interpretation of the road weather forecasts.
- 5.3 Drivers are to receive training and certification under the City and Guilds 6157 "Winter Maintenance Qualification Scheme".

**Section E Part 6 Health and Safety Procedures**

- 6.1 The Operations Manager is responsible for the Health and Safety Procedures for operational staff and details should be included in the "Highway Winter Service Operations Manual".

**SECTION F**

**PLANT**

**VEHICLES**

**AND**

**EQUIPMENT**

<b>Page</b>	<b>Part</b>	<b>Title</b>
69	Part 1	Vehicles, plant and equipment
69	Part 2	Location of plant, vehicles and other equipment
69	Part 3	Garaging, servicing and maintenance arrangements
69	Part 4	Contact and hire arrangements for contract plant
70	Part 5	Calibration procedures
70	Part 6	Fuel stocks and locations

**Section F Part 1 Vehicles Plant and Equipment**

- 1.1 The Operations Manager will ensure a sufficient number of salting vehicles are available to enable the Highway Winter Service to be delivered in a satisfactory manner.
- 1.2 KWL will supply, service and maintain the vehicles.
- 1.3 The network is almost exclusively urban and low lying and as it is not necessary or feasible to operate snow blowers there are none in the fleet.
- 1.4 "GPS" tracking equipment is installed in the vehicles.

**Section F Part 2 Location of plant and other equipment**

- 2.1 The dedicated salting vehicles are located at Stockholm Road Depot.
- 2.2 Throughout the year one vehicle will be available at Stockholm Road Depot for use to spread sand for dealing with spillages on the highway.

**Section F Part 3 Garaging, servicing and maintenance arrangements**

- 3.1 The contracted vehicle supplier will maintain and repair the dedicated salting vehicles.
- 3.2 The vehicles will be based at the operational depot at Stockholm Road.
- 3.3 The Highway Operation Section has other vehicles supplied under the "term contract" and these can be made available for Highway Winter Service duties.

**Section F Part 4 Contact and hire arrangements for contract plant**

- 4.1 There are no arrangements to contract firms or individuals to carry out routine treatments under this Highways Winter Service Plan.
- 4.2 During prolonged or severe wintry conditions the Operations Manager will make arrangements for vehicles, plant and equipment under the control of other Hull City Services Sections to be used to deliver the service.
- 4.3 When necessary the Operations Manager will make arrangements to hire in from external sources such additional vehicles, plant and equipment as may be required to deal with the conditions.

**Section F Part 5 Calibration Procedures**

- 5.1 Calibration of the salting vehicles, to BS 1622 "Salt Spreading", will be carried once a year by an appropriately qualified company.
- 5.2 The original copies of the test certificates will be kept with the Safety, Transport & Network Co-ordination Hub Section office copy of "Highway Winter Service Operations Manual". Two copies of each certificate are to be supplied to the Highway Operations Section. One of these copies must be kept in the cab of the vehicle for the driver to ensure the relevant belt and gate settings are made to deliver the instructed salt spread rate.

Commented [TR12]: Should this be duty manager

**Section F Part 6 Fuel stocks and locations**

Fuel stocks for the dedicated salt spreading and other vehicles being used for winter maintenance operations are at Stockholm Road. The Operations Section is responsible for ensuring the vehicles remain topped up ready for immediate use.

**SECTION G**

**SALT**

**AND**

**DE-ICING MATERIALS**

<b>Page</b>	<b>Part</b>	<b>Title</b>
68	Part 1	Location and capacity of stocks for salt and other materials
68	Part 2	Testing arrangements page
68	Part 3	Loading arrangements page
68	Part 4	Treatment requirements including spread rates
70	Part 5	Contacts for purchasing arrangements and supplies

**Section G Part 1 Location and capacity of stocks for salt and other materials**

- 1.1 As the City's highway network is relatively compact there is currently only one stockpile of salt for use by vehicles which is located within the Stockholm Road Depot.
- 1.2 The maximum capacity of the stockpile at Stockholm Road is around 5800 tonnes.
- 1.3 The Operations Section is responsible for ensuring a stock pile of at least 5000 tonnes is established at the start of the season (by 31<sup>st</sup> October).
- 1.4 The Operations Section will monitor the quantity of salt in the stockpile and will replenish supplies to ensure sufficient is always available for treating the highway.
- 1.5 Older salt stock is to be used before the newer deliveries.
- 1.6 The stockpile will be maintained by the Operations Section to keep it in the best possible condition.
- 1.7 At present Hull City Council do not have a salt barn but for both operational and environmental reasons a salt barn is desirable.

**Section G Part 2 Testing arrangements**

- 2.1 Salt for use on highways during winter should be to the requirements of BS 3247 "Salt for Spreading - Coarse Rock Salt".

**Section G Part 3 Loading arrangements**

- 3.1 The Operations Section is responsible for ensuring a loading shovel is available for loading the salting vehicles. A "backup vehicle", in case of breakdown of the primary loading shovel, must be able to be made available within 1 hour at the Depot during the winter period.

**Section G Part 4 Treatment requirements including spread rates**

- 4.1 Pre treatment is the most effective way of dealing with both snow and ice.
- 4.2 **Pattern of spreading**  
The salting vehicles are to be set up to salt a 7 metre width of carriageway which will be both lanes of single carriageways or both lanes of one side of a dual carriageway or 4 lane road.

#### Highway Winter Service

The salting vehicle will travel in the left-hand lane and the spreading pattern will be set to cover both lanes

#### 4.3 **The salting categories are**

Cat 1 wet salt 15 gm/m<sup>2</sup>, dry salt 10 gm/m<sup>2</sup>

Cat 2 wet salt 20 gm/m<sup>2</sup>, dry salt 15 gm/m<sup>2</sup>

Cat 3 wet salt 25 gm/m<sup>2</sup>, dry salt 20 gm/m<sup>2</sup>

Cat 4 wet salt 40 gm/m<sup>2</sup>, dry salt 40 gm/m<sup>2</sup>

Dry salt is where it is stored in a salt barn or under cover to prevent degradation by the weather.

Hull City Council at present does not have a salt barn nor for health and safety reasons, due to the shape and location, is it possible to sheet the existing salt stockpile. "Wet salt", without grit, is used routinely on all pre and post salting runs.

#### 4.4 **Precautionary Salting**

Precautionary salting will be carried out at a minimum rate of Category 2. When freezing conditions occur or are expected to occur immediately after rain, precautionary salting rates will be increased to Category 3. In these conditions salting will be delayed to reduce loss of salt by run off unless freezing conditions coincide with rainfall.

Water from thawing windrows of snow can spread across the carriageway and freeze. Additional salt may be required to deal with this (Duty Supervisor to issue instructions as applicable).

When ice is expected to form before treatment commences salt is to be spread at Category 3 or 4 depending on prevailing conditions.

#### 4.5 **Post Salting**

Where ice has formed on the road surface before the decision to salt is made then salt will be spread at a rate of Category 4. In these conditions priority will be given to principal roads.

#### 4.6 **Addition of Grit**

Where snow and ice is hard compacted grit is added to the salt in the ratio 50-50

A small stockpile containing 40 tonnes (enough for 2 treatments) of 5mm nominal size clean coarse crushed aggregate grit should be held at the depot



#### 4.7 **Very Low Temperatures**

Sustained low temperatures occur only rarely. In this event however, account will be taken of the need to increase the rate of spread of salt. Below -11°C the action of salt is ineffective.

### **Section G Part 5 Contacts for purchasing arrangements and supplies**

#### 5.1 **Bulk Purchasing**

The Operations Section will arrange for a contract for bulk purchase of winter salt for use on the highways. The tender will include for the main delivery of salt to the stockpile before the start of winter and also include for further deliveries of salt, upon demand, to replenish the stockpile as necessary.

#### 5.2 **Supply of Salt to Others**

##### a) **Council Departments, Schools etc.**

“Bulk” salt can be supplied to schools, other Council run or owned educational establishments and other Council Departments or their Contractors, from the stockpiles established providing that this does not reduce the stockpile to less than 2000 tonnes.

There will be a charge for this service consisting of the cost of the salt plus any depot loading and / or delivery charges.

Supply will be dependant on operational needs

##### b) **Non City Council Employees / External Companies**

The City Council is not permitted to supply salt to people or organisations outside the Local Authority. Local suppliers of salt are listed in trade publications and “yellow pages”.

#### Restocking of salt - guidelines

There must always be sufficient salt in stock to be able to treat the highways. Salt usage will be monitored by the Operations Section and replenished when appropriate.

At the start of winter there should be at least 5000 tonnes of salt in stock . This allows a reasonable margin of extra use during periods of snow when 500 - 600 tonnes may be required for a week’s snow clearance. One treatment spreading salt at 40gm/m<sup>2</sup> on the presalt routes requires around 80+ tonnes.

It is difficult to give precise guidelines but to be on the safe side and working backwards from the end of the season there should be in stock a minimum of

600 tonnes at the end of April,  
1000 tonnes at the end of March,  
1600 tonnes at the end of February and  
2600 tonnes at the end of January.  
3600 tonnes at end of December

Highway Winter Service

If it looks like stocks could fall below these levels then restocking should be carried out.

## SECTION H

### OPERATIONAL COMMUNICATIONS

<b>Page</b>	<b>Title</b>
76	Reporting arrangements and protocols page
76	Standing proformas to be used page

**Section H Part 1 Reporting arrangements and protocols**

- 3.1 The Duty Supervisor will report to the people / offices identified in the Highways Winter Service Operations Manual the “Daily Decision” as soon as possible after it has been reached.
- 3.2 The standard method will be by email with the proforma to be faxed if there are problems with the email system.
- 3.3 Drivers will complete a route card at the end of each treatment.

When it not possible to distribute the decision record by email the Duty Supervisor will contact the Civic Security Control Room by phone and advise of the decision. Others requiring to know the decision can contact the Control Room.

During prolonged spells of wintry conditions the entries on the CRM requesting reactive treatment will be received by the Head of Service, Highway Operations, Structures, Safety and Emergency Planning Section who will action as appropriate.

- 3.4 The Transport & Network Co-ordination Hub Section will be responsible for providing information to Council’s Call Centre or Press Office on the condition of the network / which roads are passable to vehicles during prolonged spells of snow and / or ice.

Commented [TR13]: Need to decide best place for these

**Part 2 Standing proformas to be used**

- 4.1 The following proformas are to be used:
  - a) Daily Decision Record Form
  - b) Diary Record Pages

**SECTION I**

**INFORMATION**

**AND**

**PUBLICITY**

<b>Page</b>	<b>Part</b>	<b>Title</b>
78	Part 1	Publicity page
78	Part 2	CRM Centre page
79	Part 3	Local Press and broadcast information page
79	Part 4	Other Key local and national contact information page
79	Part 5	Responsibilities and guidance for providing information page

**Section I Part 1 Publicity**

**1.1 General**

It is important that the general public is aware of and understands the City Council's approach to the Highway Winter Service. Publicity is to be given before the beginning of the winter period describing the level of service provision and operational contact points.

1.2 General advice and information for the public concerning the Highway Winter Service will be catered for by some or all of the following:-

- a) Publishing this document on the Council's Web site.
- b) Providing information to the Council's Call Centre

1.3 During the winter period and particularly during prolonged spells of snow and ice information will be made available to the public via

- a) The Council's Call Centre
- b) Press releases
- c) Local Radio Stations

**Section I Part 2 CRM Centre**

**2.1 Hull Connect**

- a) The City Council's Call Centre is responsible for dealing with the general public's telephone inquiries about the Highway Winter Service.
- b) Public requests for information on the treatment of priority areas of the highway network, requests for treatment of additional areas of the highway network and requests for salt bins should be made through the CSCs and call centre.
- c) The Transport & Network Co-ordination Hub Section will provide accurate and timely information to the CSCs and call centre to enable them to advise callers / customers of highway conditions and treatments planned or completed.
- d) Calls that cannot be handled by the CSCs and call centre will be passed to the Transport & Network Co-ordination Hub Section.
- e) Urgent out of hours and calls will go to the Departments Civic Security Operations Centre, telephone number 616720

Commented [TR14]: As above

**Section I Part 3 Local Press and broadcast information**

- 3.1 General information about the Highway Winter Service will usually be provided to the local press and radio through the Council's Press Office.
- 3.2 The City Streetscene Manager and The Traffic Manager are the only other Officers authorised to deal with the media on policy issues concerning the service.

**Section I Part 4 Other Key local and national contact information**

- 4.1 Police / Emergency Services.

The following standard terminology is used when communicating with the Police or other Emergency Services.

a) During snow/ blizzard conditions the following abbreviations are used nationally in communications with policed and other highway authorities so as to avoid misunderstandings.

INBC	impassable, not being cleared
IBC	impassable, being cleared
EMV/4WD	emergency vehicles and 4-wheel drive only
PNAP	passable, not available to the public

The following codes are **NOT** for external use

SLO	slow lane only / no overtaking
PEC	passable with extreme care, snow still present over road length
PC	passable with care, isolated areas of snow
RC	road closed

**Section I Part 5 Responsibilities and guidance for providing information**

- 5.1 The responsibility for providing information on the Highway Winter Service will rest with the Transport & Network Co-ordination Hub Section.

Not for publication (List of contacts / duty rota)